

Donington Park 4.023 m

Best Lap = 1'35.403 - 4,023 km - Avg 151,807 km/h

No.	Rider	Nat	Team	Bike	Time	Gap	Rel.	Laps
1	<b>2 MORRIS</b> Leon	GBR	Carl Cox Motorsport/P&H Motorcycles	Ducati 899	<b>1'35.403</b>			10
2	<b>13 GUIVER</b> Rob	GBR	Hyside Motorcycles	Ducati 899	<b>1'35.774</b>	0.371	0.371	12
3	<b>43 BROWN</b> Robbie	GBR	Boast Plumbing	Ducati 899	<b>1'36.025</b>	0.622	0.251	12
4	<b>7 ATKINSON</b> Phil	RSA	Highsparks Motorsport	Ducati 899	<b>1'36.146</b>	0.743	0.121	12
5	<b>77 RAILTON</b> Jonathan	GBR	Boast Plumbing	Ducati 899	<b>1'36.296</b>	0.893	0.150	11
6	<b>11 DAWSON</b> Louis	GBR	Ducati Wolverhampton	Ducati 899	<b>1'36.742</b>	1.339	0.446	9
7	<b>41 FERNS</b> David	GBR	Team DFR	Ducati 899	<b>1'37.183</b>	1.780	0.441	12
8	<b>42 CURRIE</b> Craig	GBR	Zoek Racing Team	Ducati 899	<b>1'37.325</b>	1.922	0.142	11
9	<b>21 CHEETHAM</b> Mark	GBR	Highsparks Motorsport	Ducati 899	<b>1'37.747</b>	2.344	0.422	12
10	<b>67 HUMPHRIES</b> Ross	GBR	ross67racing	Ducati 899	<b>1'37.929</b>	2.526	0.182	6
11	<b>48 WILSON</b> Nicky	GBR	NWR (Nicky Wilson Racing)	Ducati 899	<b>1'38.493</b>	3.090	0.564	11
12	<b>5 MIDDLEMAS</b> Sam	GBR	Salus/Albany	Ducati 899	<b>1'38.972</b>	3.569	0.479	11
13	<b>75 HILL</b> Danny	GBR	DHR	Ducati 899	<b>1'39.495</b>	4.092	0.523	4
14	<b>15 WAGHORN</b> Jon	GBR	JW Smart Services Ltd / Laguna Mot	Ducati 899	<b>1'39.730</b>	4.327	0.235	10
15	<b>27 SKINNER</b> Taryn	GBR	FS Racing	Ducati 899	<b>1'39.960</b>	4.557	0.230	12
16	<b>28 BROADWAY</b> Ben	GBR	BBR	Ducati 899	<b>1'40.666</b>	5.263	0.706	11
17	<b>23 FOSTER</b> Adam	GBR	FS Racing	Ducati 899	<b>1'41.345</b>	5.942	0.679	11
18	<b>49 RAWSTHORNE</b> Tom	GBR	JWF Motorsport	Ducati 899	<b>1'41.546</b>	6.143	0.201	10
19	<b>22 MACKAY</b> Dave	GBR	True Heroes Racing/Laguna	Ducati 899	<b>1'41.657</b>	6.254	0.111	9
20	<b>16 MASON</b> Jake	GBR	Hyside Motorcycles/Jimmy Mann Rac	Ducati 899	<b>1'42.002</b>	6.599	0.345	11
21	<b>34 WADDELOW</b> Steph	GBR	Highsparks Motorsport	Ducati 899	<b>1'42.803</b>	7.400	0.801	11
22	<b>69 COMPTON</b> Dijon	GBR	AOR/ZERO	Ducati 899	<b>1'42.995</b>	7.592	0.192	10
23	<b>17 STEVENS</b> Carl	GBR	Freeman Harris Solicitors	Ducati 899	<b>1'43.014</b>	7.611	0.019	8
24	<b>14 KING</b> Loris	GBR	RK Corse	Ducati 899	<b>1'43.602</b>	8.199	0.588	11
25	<b>98 JAGGARD</b> Keith	GBR	Total Plant Ducati	Ducati 899	<b>1'45.082</b>	9.679	1.480	6
26	<b>912 HAMBRO</b> Murray	GBR	True Heroes Racing/Laguna	Ducati 899	<b>1'45.525</b>	10.122	0.443	5
27	<b>88 ROONEY</b> Rik	GBR	Highsparks Motorsport	Ducati 899	<b>1'45.911</b>	10.508	0.386	10
28	<b>71 PEARCE</b> Wesley	GBR	777 racing/P&H Motorcycles	Ducati 899	<b>1'45.918</b>	10.515	0.007	4
29	<b>6 HASLER</b> Peter	GBR	AOR/ZERO	Ducati 899				0
30	<b>10 NEARY</b> Sean	GBR	Zoek Racing Team	Ducati 899				0
31	<b>44 FAGAN</b> Alastair	GBR	P&H Motorcycles/Carl Cox Motorspor	Ducati 899				0
32	<b>57 RICHARDSON</b> Chris	GBR	Silly racing	Ducati 899				0
33	<b>61 GARROTE</b> Ricardo	ESP	Realy Racing	Ducati 899				0

Qualifying Lap Time (110% of 1'35.403): **1'44.944**

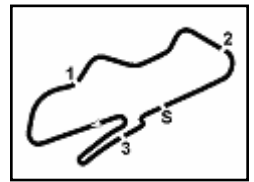
N. 6 (Hasler) & 10 (Neary) Transponder Not Working

N. 28 (Broadway) Low Transponder Battery

Humidity:	63%	AIR	15°C
Condition:	Dry	Temp:	27°C

Start 27/05/2016 12:45  
End 13:12

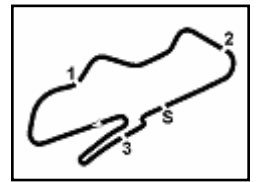
The results are provisional until the end of the time limit for protests and appeals and the completion of the technical checks.



No.	Rider	Nat	Bike	Seg. 1 Diff. 1	Seg. 2 Diff. 2	Seg. 3 Diff. 3	Seg. 4 Diff. 4	Seg. 5 Diff. 5	Ideal Time Best Lap	Pos.	Diff.
1	<b>2 L. MORRIS</b>	GBR	Ducati 899	20.568 0.035	<b>26.077</b>	12.229	<b>11.598</b>	<b>24.896</b>	<b>1'35.368</b> 1'35.403	6	0.035
2	<b>13 R. GUIVER</b>	GBR	Ducati 899	<b>20.379</b> 0.117	26.082	<b>12.191</b>	11.667 0.046	25.113 0.179	<b>1'35.432</b> 1'35.774	7	0.342
3	<b>7 P. ATKINSON</b>	RSA	Ducati 899	20.628 0.071	26.194	12.196 0.079	11.625 0.092	25.183 0.078	<b>1'35.826</b> 1'36.146	9	0.320
4	<b>43 R. BROWN</b>	GBR	Ducati 899	20.755	26.262	12.346	11.623	25.039	<b>1'36.025</b> 1'36.025	8	0.000
5	<b>77 J. RAILTON</b>	GBR	Ducati 899	20.789 0.067	26.132 0.061	12.428 0.047	11.648	25.124	<b>1'36.121</b> 1'36.296	10	0.175
6	<b>11 L. DAWSON</b>	GBR	Ducati 899	20.862	26.293	12.283 0.030	11.812 0.076	25.347 0.039	<b>1'36.597</b> 1'36.742	11	0.145
7	<b>41 D. FERNS</b>	GBR	Ducati 899	21.132 0.105	26.266 0.098	12.320 0.117	11.734	25.411	<b>1'36.863</b> 1'37.183	12	0.320
8	<b>42 C. CURRIE</b>	GBR	Ducati 899	20.901 0.168	26.405	12.514 0.094	11.830	25.413	<b>1'37.063</b> 1'37.325	13	0.262
9	<b>21 M. CHEETHAM</b>	GBR	Ducati 899	21.100	26.565 0.591	12.448	11.936 0.065	25.042	<b>1'37.091</b> 1'37.747	14	0.656
10	<b>67 R. HUMPHRIES</b>	GBR	Ducati 899	20.993 0.077	26.508 0.086	12.405	12.099	25.761	<b>1'37.766</b> 1'37.929	15	0.163
11	<b>48 N. WILSON</b>	GBR	Ducati 899	21.361	26.666	12.496 0.010	12.199 0.059	25.702	<b>1'38.424</b> 1'38.493	16	0.069
12	<b>5 S. MIDDLEMAS</b>	GBR	Ducati 899	21.402	26.763 0.069	12.589 0.011	12.137	25.693 0.308	<b>1'38.584</b> 1'38.972	17	0.388
13	<b>15 J. WAGHORN</b>	GBR	Ducati 899	21.298 0.198	26.892	12.553 0.012	12.369 0.165	25.587 0.656	<b>1'38.699</b> 1'39.730	19	1.031
14	<b>75 D. HILL</b>	GBR	Ducati 899	21.558	26.833 0.458	12.601	12.057	25.988	<b>1'39.037</b> 1'39.495	18	0.458
15	<b>27 T. SKINNER</b>	GBR	Ducati 899	21.645 0.003	27.607 0.138	12.652 0.044	12.045 0.048	25.656 0.122	<b>1'39.605</b> 1'39.960	20	0.355
16	<b>28 B. BROADWAY</b>	GBR	Ducati 899	21.631 0.036	27.375 0.310	12.649	12.423	26.242	<b>1'40.320</b> 1'40.666	21	0.346
17	<b>23 A. FOSTER</b>	GBR	Ducati 899	21.955 0.055	27.445	12.808 0.029	12.250	26.318 0.485	<b>1'40.776</b> 1'41.345	22	0.569
18	<b>49 T. RAWSTHORNE</b>	GBR	Ducati 899	21.888 0.035	27.576	12.916	12.447	26.031 0.653	<b>1'40.858</b> 1'41.546	23	0.688
19	<b>16 J. MASON</b>	GBR	Ducati 899	21.758 0.432	28.130 0.142	12.710 0.101	12.119 0.418	26.192	<b>1'40.909</b> 1'42.002	25	1.093
20	<b>22 D. MACKAY</b>	GBR	Ducati 899	21.883	27.792 0.104	12.721	12.613	26.450 0.094	<b>1'41.459</b> 1'41.657	24	0.198
21	<b>34 S. WADDELOW</b>	GBR	Ducati 899	22.041 0.174	28.217 0.141	12.744	12.518	26.968	<b>1'42.488</b> 1'42.803	26	0.315
22	<b>17 C. STEVENS</b>	GBR	Ducati 899	22.136 0.349	28.135 0.018	12.954 0.054	12.399	26.969	<b>1'42.593</b> 1'43.014	28	0.421
23	<b>69 D. COMPTON</b>	GBR	Ducati 899	22.470	28.261 0.168	12.912	12.416	26.768	<b>1'42.827</b> 1'42.995	27	0.168
24	<b>14 L. KING</b>	GBR	Ducati 899	22.394 0.073	28.031 0.532	13.046 0.065	12.981	26.480	<b>1'42.932</b> 1'43.602	29	0.670
25	<b>98 K. JAGGARD</b>	GBR	Ducati 899	22.567	28.950	13.100	12.957 0.381	27.127	<b>1'44.701</b> 1'45.082	30	0.381
26	<b>912 M. HAMBRO</b>	GBR	Ducati 899	23.140	28.514	12.880 0.071	12.795 0.551	27.558 0.016	<b>1'44.887</b> 1'45.525	31	0.638
27	<b>71 W. PEARCE</b>	GBR	Ducati 899	22.884 0.743	28.848	13.169 0.130	12.923	27.221	<b>1'45.045</b> 1'45.918	33	0.873
28	<b>88 R. ROONEY</b>	GBR	Ducati 899	22.861	28.474	13.344	13.208	27.812 0.212	<b>1'45.699</b> 1'45.911	32	0.212
<b>Overall Ideal Time</b>				20.379	26.077	12.191	11.598	24.896	<b>1'35.141</b>		

27/05/2016

These data/results cannot be reproduced, stored and/or transmitted in whole or in part by any manner of electronic, mechanical, photocopying, recording, broadcasting or otherwise now known or herein after developed without the previous express consent by the copyright owner, except for reproduction in daily press and regular printed publications on sale to the public within 60 days of the event related to those data/results and always provided that copyright symbol appears together as follows below.  
© DORNA WSBK ORGANIZATION Srl 2016



1° 2 L. MORRIS (1'35.403)								
Lap	Seg. 1	Seg. 2	Seg. 3	Seg. 4	Seg. 5	Lap Time	km/h	Local Time
1	21.802	31.028	13.786	12.881	27.822	1'40.274	218.6	12:46:57.807
2	20.871	28.003	12.489	12.202	25.778	1'36.886	<b>236.3</b>	12:50:14.967
3	20.678	26.461	12.255	11.760	25.316	1'36.431	<b>236.3</b>	12:51:51.398
4	21.155	26.622	12.318	11.946	29.547	1'41.588 P	233.3	12:53:32.986
5	1'38.588	27.279	12.270	11.805	25.905	2'55.847 P	234.3	12:56:28.833
6	20.768	26.313	12.819	11.761	23.916	1'35.577 P	233.8	12:58:04.410
7	6'20.584	27.753	12.584	12.068	25.910	7'38.899 P	230.3	13:05:43.309
8	21.349	26.674	12.504	11.745	25.176	1'37.448	234.8	13:07:20.757
9	<b>20.568</b>	26.206	12.373	11.748	25.011	1'35.906	234.8	13:08:56.663
10	20.603	<b>26.077</b>	<b>12.229</b>	<b>11.598</b>	<b>24.896</b>	<b>1'35.403</b>	234.8	13:10:32.066

2° 13 R. GUIVER (1'35.774)								
Lap	Seg. 1	Seg. 2	Seg. 3	Seg. 4	Seg. 5	Lap Time	km/h	Local Time
1	21.789	32.042	13.872	13.977	27.111	1'40.004	201.9	12:47:04.599
2	21.428	27.258	12.458	12.378	26.121	1'38.929	228.8	12:48:44.603
3	20.742	26.947	12.404	12.114	26.036	1'38.929	231.8	12:50:23.532
4	20.848	26.691	12.352	12.013	25.620	1'37.418	233.8	12:52:00.950
5	20.532	26.042	12.336	12.676	26.571	1'40.473	211.4	12:53:41.423
6	20.496	26.188	12.398	11.711	25.575	1'36.404	235.8	12:55:17.827
7	20.492	<b>26.082</b>	<b>12.191</b>	11.713	25.292	<b>1'35.774</b>	<b>237.9</b>	12:56:53.601
8	20.395	26.244	12.325	<b>11.667</b>	<b>25.113</b>	1'35.844	234.8	12:58:29.445
9	<b>20.379</b>	26.365	16.174	16.121	33.561	1'52.600 C	151.3	13:00:22.045
10	4'26.473	28.142	12.973	13.506	27.438	5'48.532 P	220.0	13:06:10.577
11	21.659	27.936	12.521	11.819	25.540	1'39.475	234.8	13:07:50.052
12	20.533	26.445	12.364	12.092	25.298	1'36.732	233.3	13:09:26.784
13	20.503	26.104	12.271	11.979	25.144	1'36.001	236.3	13:11:02.785

3° 43 R. BROWN (1'36.025)								
Lap	Seg. 1	Seg. 2	Seg. 3	Seg. 4	Seg. 5	Lap Time	km/h	Local Time
1	21.687	33.395	13.888	13.681	27.184	1'40.277	225.0	12:47:03.975
2	21.526	27.358	12.582	12.095	26.555	1'38.914	230.8	12:48:44.252
3	20.879	26.893	12.471	11.936	26.088	1'37.485	231.8	12:50:23.166
4	20.854	26.730	12.435	11.769	25.672	1'37.485	231.8	12:52:00.950
5	20.920	26.614	12.539	12.170	26.429	1'38.606	228.3	12:53:39.257
6	20.920	26.461	12.382	11.705	25.456	1'36.924	231.3	12:55:16.181
7	20.791	26.609	12.424	11.690	25.329	1'36.843	230.3	12:56:53.024
8	21.548	26.647	12.401	12.078	25.823	1'38.497	<b>233.8</b>	12:58:31.521
9	20.901	30.750	13.840	14.064	32.195	1'51.750 C	197.4	13:00:23.271
10	4'29.924	28.022	12.691	14.005	29.753	5'54.395 P	231.3	13:06:17.666
11	21.606	27.132	12.362	12.226	25.328	1'38.654	232.8	13:07:56.320
12	<b>20.755</b>	<b>26.262</b>	<b>12.346</b>	<b>11.623</b>	<b>25.039</b>	<b>1'36.025</b>	231.8	13:09:32.345
13	21.118	28.556	12.601	12.902	27.989	1'43.166	225.0	13:11:15.511

4° 7 P. ATKINSON (1'36.146)								
Lap	Seg. 1	Seg. 2	Seg. 3	Seg. 4	Seg. 5	Lap Time	km/h	Local Time
1	21.343	29.889	12.739	13.106	26.739	1'38.558	232.8	12:46:51.071
2	20.816	26.879	12.398	11.952	25.986	1'36.663	<b>236.8</b>	12:48:29.629
3	20.802	26.421	12.196	11.843	25.387	1'36.663	233.8	12:50:06.292
4	20.826	26.324	12.299	<b>11.625</b>	25.487	1'36.537	234.8	12:51:42.829
5	<b>20.628</b>	26.371	12.327	11.699	25.317	1'36.342	233.3	12:53:19.171
6	20.699	26.194	12.275	11.717	25.261	1'36.146	234.3	12:54:55.317
7	20.684	26.396	12.260	11.644	25.224	1'36.208	<b>236.8</b>	12:56:31.525
8	20.760	26.252	12.394	11.991	<b>25.183</b>	1'36.580	234.3	12:58:08.105
9	20.706	26.491	15.931	13.757	28.129	1'45.014 C	180.0	12:59:53.119
10	4'39.215	26.893	12.414	11.973	25.334	5'55.829 P	233.8	13:05:48.948
11	20.999	26.474	12.358	11.908	25.257	1'36.996	233.8	13:07:25.944
12	20.762	26.350	12.322	11.722	25.324	1'36.480	235.3	13:09:02.424
13	21.143	26.803	12.250	11.743	25.434	1'37.373	236.3	13:10:39.797

5° 77 J. RAILTON (1'36.296)								
Lap	Seg. 1	Seg. 2	Seg. 3	Seg. 4	Seg. 5	Lap Time	km/h	Local Time
1	21.739	29.583	13.154	12.857	26.568	1'39.525	226.9	12:46:47.750
2	21.156	27.268	12.738	12.133	25.647	1'37.793	227.8	12:48:27.275
3	20.964	26.779	12.630	11.856	25.372	1'37.793	227.8	12:50:05.068
4	20.964	26.347	12.626	11.794	25.476	1'37.207	227.8	12:51:42.275
5	20.859	26.434	<b>12.428</b>	11.735	25.221	1'36.677	228.3	12:53:18.952
6	<b>20.789</b>	<b>26.132</b>	12.441	11.686	23.538	1'34.586 P	227.8	12:54:53.538
7	1'41.016	27.524	12.867	12.305	26.374	3'00.086 P	228.8	12:57:53.624
8	23.236	27.841	12.734	12.637	24.785	1'41.233 C	215.6	12:59:34.857
9	4'51.145	28.769	12.993	12.475	25.373	6'10.755 P	225.0	13:05:45.612
10	1'19.495	27.653	13.142	12.274	26.399	2'38.963 P	223.6	13:08:24.575
11	22.718	27.408	12.558	11.885	25.440	1'40.009	228.3	13:10:04.584
12	20.856	26.193	12.475	<b>11.648</b>	<b>25.124</b>	<b>1'36.296</b>	<b>229.3</b>	13:11:40.880

P = Pits In/Out - C = Lap-Time Cancelled

These data/results cannot be reproduced, stored and/or transmitted in whole or in part by any manner of electronic, mechanical, photocopying, recording, broadcasting or otherwise now known or herein after developed without the previous express consent by the copyright owner, except for reproduction in daily press and regular printed publications on sale to the public within 60 days of the event related to those data/results and always provided that copyright symbol appears together as follows below.

© DORNA WSBK ORGANIZATION Srl 2016

6° 11 L. DAWSON (1'36.742)								
Lap	Seg. 1	Seg. 2	Seg. 3	Seg. 4	Seg. 5	Lap Time	km/h	Local Time
1	21.912	29.333	12.880	12.718	26.713	1'40.248	225.9	12:46:49.724
2	21.146	27.395	12.589	12.332	26.020	1'37.447	230.8	12:48:29.972
3	21.053	26.486	12.338	11.954	25.523	1'37.382	232.8	12:50:07.419
4	20.933	26.629	12.371	11.971	25.358	1'36.783	232.8	12:51:44.801
5	<b>20.862</b>	26.336	12.355	<b>11.812</b>	<b>25.347</b>	1'36.742	233.3	12:53:21.584
6	<b>20.862</b>	<b>26.293</b>	12.313	11.888	25.386	<b>1'36.742</b>	233.3	12:54:58.326
7	23.806	26.994	12.337	11.975	27.772	1'42.884 P	233.8	12:56:41.210
8	7'42.092	27.400	12.518	12.076	26.008	9'00.094 P	229.3	13:05:41.304
9	24.105	26.630	12.301	11.968	25.469	1'40.473	236.3	13:07:21.777
10	24.389	27.105	<b>12.283</b>	12.047	24.816	1'40.640 P	<b>236.8</b>	13:09:02.417

7° 41 D. FERNS (1'37.183)								
Lap	Seg. 1	Seg. 2	Seg. 3	Seg. 4	Seg. 5	Lap Time	km/h	Local Time
1	21.825	29.629	12.912	12.967	26.642	1'39.923	222.2	12:46:48.121
2	21.439	27.278	12.572	12.137	26.111	1'38.916	228.8	12:48:28.044
3	21.170	26.681	12.484	12.005	25.889	1'38.229	227.8	12:50:06.960
4	21.225	26.640	12.339	11.933	25.567	1'37.704	230.8	12:51:45.189
5	21.222	26.445	<b>12.320</b>	11.796	25.641	1'37.424	230.8	12:53:22.893
6	21.438	26.761	12.466	12.255	25.655	1'38.575	229.8	12:56:38.892
7	<b>21.132</b>	26.846	12.732	12.141	25.967	1'38.818	229.3	12:58:17.710
8	21.538	27.058	15.750	15.929	30.037	1'50.312 C	152.3	13:00:08.022
9	4'18.996	28.366	12.631	12.459	26.064	5'38.516 P	227.8	13:05:46.538
10	21.374	26.410	12.383	11.953	25.614	1'37.734	<b>231.3</b>	13:07:24.272
11	21.209	<b>26.266</b>	12.389	12.201	25.644	1'37.709	228.3	13:09:01.981
12	21.237	26.364	12.437	<b>11.734</b>	<b>25.411</b>	<b>1'37.183</b>	230.8	13:10:39.164

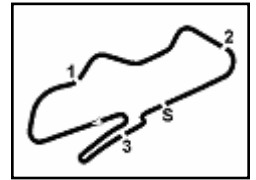
8° 42 C. CURRIE (1'37.325)								
Lap	Seg. 1	Seg. 2	Seg. 3	Seg. 4	Seg. 5	Lap Time	km/h	Local Time
1	22.504	33.300	13.856	13.540	28.977	1'43.987	226.9	12:47:10.200
2	21.531	28.528	12.833	12.697	27.425	1'39.803	230.3	12:48:54.187
3	21.443	27.532	12.600	12.154	25.986	1'40.449 P	<b>231.8</b>	12:50:33.960
4	1'04.865	28.586	12.638	12.196	26.024	2'24.309 P	231.3	12:52:14.439
5	21.475	26.659	12.518	12.533	26.499	1'40.684	230.8	12:54:38.748
6	21.048	26.734	<b>12.514</b>	12.157	25.523	1'37.976	230.8	12:56:17.400
7	<b>20.901</b>	26.504	12.711	15.104	32.147	1'47.367 C	208.9	12:59:47.775
8	5'25.326	28.904	12.897	12.763	27.094	6'46.984 P	225.9	13:06:31.759
9	21.140	26.658	12.745	12.017	25.429	1'37.989	230.3	13:08:09.748
10	21.069	<b>26.405</b>	12.608	<b>11.830</b>	<b>25.413</b>	<b>1'37.325</b>	230.3	13:09:47.073
11	21.736	27.479	12.572	11.939	25.427	1'39.153	230.8	13:11:26.226

9° 21 M. CHEETHAM (1'37.747)								
Lap	Seg. 1	Seg. 2	Seg. 3	Seg. 4	Seg. 5	Lap Time	km/h	Local Time
1	22.713	33.484						



# UK Round, 27-28-29 May 2016

## Ducati TriOptions Cup - Chronological Analysis Free Practice



Donington Park 4.023 m

Lap	Seg. 1	Seg. 2	Seg. 3	Seg. 4	Seg. 5	Lap Time	km/h	Local Time
4	21.361	26.666	12.506	12.258	25.702	1'38.493	229.8	12:53'48.558
5	21.530	26.696	12.496	12.288	26.009	1'39.019	230.8	12:55'27.577
6	21.557	26.831	12.596	12.265	25.922	1'39.171	225.5	12:57'06.748
7	21.488	27.494	12.657	12.313	23.956	1'37.908 P	225.5	12:58'44.656
8	6'03.199	28.782	13.163	13.153	27.022	7'25.319 P	226.4	13:06'09.975
9	22.170	27.879	12.721	12.199	26.044	1'41.013	224.5	13:07'50.988
10	21.489	26.778	12.602	12.356	26.751	1'39.976	233.8	13:09'30.964
11	21.907	28.134	12.913	12.770	26.881	1'42.605	229.8	13:11'13.569

12° 5 S. MIDDLEMAS (1'38.972)								
Lap	Seg. 1	Seg. 2	Seg. 3	Seg. 4	Seg. 5	Lap Time	km/h	Local Time
1	22.834	31.969	13.889	14.194	28.938	201.1	12:47'06.839	
2	22.834	30.116	14.035	14.479	40.713	2'02.177 P	189.1	12:49'09.016
3	22.700	27.529	13.019	12.837	26.324	1'42.409	220.9	12:51'16.781
4	21.916	27.121	12.589	12.472	26.198	1'40.296	224.5	12:54'39.486
5	21.549	27.350	12.681	12.343	26.431	1'40.354	228.3	12:56'19.840
6	21.402	26.832	12.600	12.137	26.001	1'38.972	225.5	12:57'58.812
7	21.653	26.763	12.833	14.972	32.616	1'48.837 C	183.7	12:59'47.649
8	4'36.151	27.557	12.701	12.407	26.372	5'55.188 P	222.2	13:05'42.837
9	21.488	27.023	12.853	12.501	26.027	1'39.892	225.0	13:07'22.729
10	21.544	26.854	12.652	12.254	25.693	1'38.997	226.4	13:09'01.726
11	21.731	27.167	12.657	12.364	26.137	1'40.056	226.4	13:10'41.782

13° 75 D. HILL (1'39.495)								
Lap	Seg. 1	Seg. 2	Seg. 3	Seg. 4	Seg. 5	Lap Time	km/h	Local Time
1	22.981	31.253	13.888	13.910	28.094	213.0	12:47'06.217	
2	22.005	28.238	12.889	12.870	26.820	1'43.798	225.0	12:48'50.015
3	21.558	27.587	12.741	13.029	26.046	1'41.408	231.3	12:50'31.423
4	21.567	27.291	12.601	12.057	25.988	1'39.495	230.8	12:52'10.918
5	21.567	26.833	12.614	12.262	35.827	1'49.103 P	229.8	12:54'00.021

14° 15 J. WAGHORN (1'39.730)								
Lap	Seg. 1	Seg. 2	Seg. 3	Seg. 4	Seg. 5	Lap Time	km/h	Local Time
1	21.973	29.884	13.212	13.536	27.699	217.3	12:46'51.612	
2	22.005	27.782	12.712	12.556	26.622	1'41.645	222.7	12:48'33.257
3	21.496	27.557	12.764	12.851	26.387	1'41.564	221.8	12:50'14.821
4	21.298	26.892	12.565	12.534	26.243	1'39.730	225.0	12:51'54.551
5	2'47.195	27.757	12.752	12.386	29.421	4'07.510 P	222.2	12:53'38.165
6	21.758	28.665	12.934	12.721	25.995	4'07.510 P	222.2	12:57'45.675
7	5'01.971	27.432	12.729	12.402	28.623	1'42.944 C	223.1	12:59'28.619
8	22.110	28.798	12.791	12.622	25.931	6'22.113 P	224.1	13:05'50.732
9	21.643	27.929	12.785	12.369	25.653	1'40.846	221.3	13:07'31.578
10	21.692	27.313	12.553	12.601	26.796	1'40.906	225.5	13:09'12.484
11	21.692	27.473	12.762	12.547	25.587	1'40.061	223.1	13:10'52.545

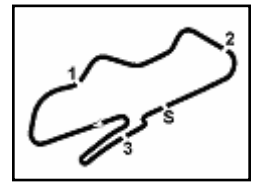
15° 27 T. SKINNER (1'39.960)								
Lap	Seg. 1	Seg. 2	Seg. 3	Seg. 4	Seg. 5	Lap Time	km/h	Local Time
1	23.445	31.333	13.517	13.971	27.957	217.7	12:46'55.215	
2	22.110	29.581	13.061	12.454	26.699	1'45.240	224.1	12:48'40.455
3	22.023	28.452	12.853	12.608	26.517	1'42.540	227.4	12:50'22.995
4	22.049	27.759	12.784	12.358	25.656	1'40.580	228.3	12:52'03.575
5	22.052	28.076	12.855	12.119	26.107	1'41.206	226.9	12:53'44.781
6	21.691	27.607	12.731	12.334	26.044	1'40.768	227.8	12:55'25.549
7	21.775	27.785	12.851	12.407	25.851	1'40.585	223.6	12:57'06.134
8	24.218	27.956	12.652	12.410	26.301	1'41.094	233.3	12:58'47.228
9	3'18.532	39.367	14.658	16.210	47.889	2'22.342 C	150.6	13:01'09.570
10	21.648	28.548	12.683	12.501	25.967	4'38.231 P	229.8	13:05'47.801
11	21.695	27.745	12.696	12.093	25.778	1'39.960	229.3	13:07'27.761
12	21.645	27.879	12.844	12.045	25.847	1'40.310	225.9	13:09'08.071
13	21.645	27.955	12.758	12.252	26.033	1'40.643	228.3	13:10'48.714

16° 28 B. BROADWAY (1'40.666)								
Lap	Seg. 1	Seg. 2	Seg. 3	Seg. 4	Seg. 5	Lap Time	km/h	Local Time
1	24.097	33.392	14.115	14.146	28.958	206.9	12:47'05.726	
2	22.274	30.202	13.691	13.400	27.693	1'49.083	216.4	12:48'54.809
3	21.832	28.122	12.911	12.858	26.786	1'42.951	225.5	12:50'37.760
4	22.240	27.610	12.885	13.141	26.635	1'42.103	227.8	12:52'19.863
5	21.790	28.474	12.969	13.087	26.906	1'43.676	224.1	12:54'03.539
6	21.790	28.007	12.772	12.573	26.508	1'41.650	226.9	12:55'45.189
7	21.667	27.685	12.649	12.423	26.242	1'40.666	226.4	12:57'25.855
8	5'23.810	27.375	12.766	12.731	29.308	1'43.811 C	226.9	12:59'09.666
9	21.843	29.760	13.423	13.262	27.467	6'47.722 P	225.0	13:05'57.388
10	22.042	27.462	12.684	12.751	26.581	1'41.321	226.9	13:07'38.709
11	21.791	27.406	12.698	12.468	26.814	1'41.428	224.1	13:09'20.137
12	21.791	27.596	12.883	12.702	26.749	1'41.721	223.6	13:11'01.858

17° 23 A. FOSTER (1'41.345)								
Lap	Seg. 1	Seg. 2	Seg. 3	Seg. 4	Seg. 5	Lap Time	km/h	Local Time
1	23.054	33.154	14.009	13.464	28.948	216.9	12:47'03.508	
2	22.028	28.792	13.163	12.641	27.085	1'44.735	221.3	12:48'48.243
3	22.028	27.978	13.174	12.601	27.269	1'43.050	225.0	12:52'15.520
4	23.154	28.297	12.961	12.380	26.742	1'43.534	225.0	12:53'59.054
5	22.004	28.112	12.924	12.577	26.545	1'42.162	225.5	12:55'41.216
6	21.955	27.993	12.926	12.422	26.725	1'42.021	225.5	12:57'23.237
7	22.157	27.502	12.808	12.500	30.478	1'45.445 C	225.0	12:59'08.682
8	5'25.032	31.442	13.399	13.033	27.341	6'50.247 P	214.7	13:05'58.929
9	22.121	27.790	12.980	12.479	26.483	1'41.853	223.6	13:07'40.782
10	22.010	27.445	12.837	12.250	26.803	1'41.345	225.5	13:09'22.127
11	22.259	28.005	12.830	12.367	26.318	1'41.779	224.5	13:11'03.906

18° 49 T. RAWSTHORNE (1'41.546)								
Lap	Seg. 1	Seg. 2	Seg. 3	Seg. 4	Seg. 5	Lap Time	km/h	Local Time
1	23.516	33.890	13.993	13.458	29.765	207.7	12:47'14.377	
2	22.953	29.334	13.113	13.188	27.685	1'46.836	221.8	12:49'01.213
3	21.888	29.606	13.134	13.144	26.227	1'45.064	223.6	12:50'46.277
4	22.211	28.203	13.155	12.464	26.031	1'41.741	224.1	12:52'28.018
5	22.041	28.178	13.131	12.490	26.200	1'42.210	225.9	12:54'10.228
6	22.041	28.388	13.020	12.455	26.317	1'42.221	225.5	12:55'52.449
7	6'47.437	30.097	14.200	13.481	26.301	1'46.447 P	177.9	12:57'38.896
8	21.923	29.244	13.140	12.881	26.710	8'09.412 P	213.9	13:05'48.308
9	21.923	27.576	12.916	12.447	26.684	1'41.546	220.9	13:07'29.854
10	22.002	27.926	13.035	12.501	27.001	1'42.465	221.8	13:09'12.319
11	22.073	28.465	13.115	12.533	26.610	1'42.796	217.3	13:10'55.115

19° 22 D. MACKAY (1'41.657)								
Lap	Seg. 1	Seg. 2	Seg. 3	Seg. 4	Seg. 5	Lap Time	km/h	Local Time
1	23.290	33.493	14.244	14.762	29.152	208.5	12:47'07.936	
2	22.450	29.422	13.349	13.663	27.667	1'47.391	210.1	12:48'55.327
3	23.228	28.526	13.142	13.091	26.537	1'43.746	216.9	12:50'39.073
4	22.245	28.254	12.826	12.989	26.568	1'43.865	219.5	12:52'22.938
5	22.425	28.163	13.053	12.784	26.450	1'42.695	220.0	12:54'05.633
6	22.480	28.113	12.954	12.827	26.843	1'43.217	221.3	12:55'48.850
7	22.588	27.792	12.912	12.745	26.835	1'42.872	222.2	12:57'31.722
8	22.351	28.489	13.125	12.801	34.216	1'50.982 C	220.0	12:59'22.704
9	5'11.293	2						



2	23.115	28.607	13.378	12.964	26.972	1'45.036	222.2	12:50'41.562
3	22.709	29.994	13.365	12.617	26.854	1'45.539	225.0	12:52'27.101
4	22.754	30.181	13.477	12.967	33.325	1'52.704 P	219.1	12:54'19.805
5	1'49.048	29.489	13.299	12.751	26.845	3'11.432 P	227.4	12:57'31.237
6	22.634	28.461	13.154	12.524	34.369	1'51.142 C	224.1	12:59'22.379
7	5'16.185	30.927	13.243	12.776	27.486	6'40.617 P	228.3	13:06'02.996
8	22.627	28.476	13.057	12.573	27.244	1'43.977	228.3	13:07'46.973
9	<b>22.470</b>	<b>28.429</b>	<b>12.912</b>	<b>12.416</b>	<b>26.768</b>	<b>1'42.995</b>	<b>229.3</b>	13:09'29.968
10	22.601	<b>28.261</b>	12.999	13.102	28.093	1'45.056	224.5	13:11'15.024

**23° 17 C. STEVENS (1'43.014)**

Lap	Seg. 1	Seg. 2	Seg. 3	Seg. 4	Seg. 5	Lap Time	km/h	Local Time
		31.333	13.798	13.433	29.422		223.6	12:46'58.982
1	22.909	28.706	13.122	12.815	27.753	1'45.305	226.9	12:48'44.287
2	22.464	<b>28.135</b>	<b>12.954</b>	12.491	27.231	1'43.275	227.4	12:50'27.562
3	<b>22.136</b>	28.214	13.035	12.459	27.487	1'43.331	227.8	12:52'10.893
4	22.483	32.093	15.822	16.766	37.120	2'04.284	179.4	12:54'15.177
5	22.485	28.153	13.008	<b>12.399</b>	<b>26.969</b>	<b>1'43.014</b>	<b>229.8</b>	12:55'58.191
6	22.352	28.388	13.090	12.606	27.370	1'43.806	229.3	12:57'41.997
7	22.243	28.312	13.182	12.489	31.540	1'47.766 C	227.4	12:59'29.763
8	5'06.007	29.793	13.215	13.385	28.226	6'30.626 P	229.3	13:06'00.389

**24° 14 L. KING (1'43.602)**

Lap	Seg. 1	Seg. 2	Seg. 3	Seg. 4	Seg. 5	Lap Time	km/h	Local Time
		31.926	14.042	13.911	28.667		222.7	12:46'59.774
1	22.920	29.031	13.463	13.463	27.638	1'46.515	221.8	12:48'46.289
2	22.865	28.896	13.248	14.617	27.959	1'47.585	223.1	12:50'33.874
3	22.672	29.130	13.305	13.022	27.572	1'45.701	225.0	12:52'19.575
4	<b>22.394</b>	28.299	13.211	13.671	27.641	1'45.216	222.2	12:54'04.791
5	22.635	28.485	13.098	13.528	27.197	1'44.943	225.0	12:55'49.734
6	22.596	<b>28.031</b>	<b>13.046</b>	13.154	26.852	1'43.679	225.5	12:57'33.413
7	22.598	28.767	13.120	13.086	32.872	1'50.443 C	225.5	12:59'23.856
8	5'04.139	29.234	13.047	13.098	26.879	6'26.397 P	226.4	13:05'50.253
9	22.467	28.563	13.111	<b>12.981</b>	<b>26.480</b>	<b>1'43.602</b>	<b>227.8</b>	13:07'33.855
10	22.435	28.409	13.147	12.992	26.638	1'43.621	224.5	13:09'17.476
11	22.409	28.631	13.073	13.107	26.995	1'44.215	225.0	13:11'01.691

**25° 98 K. JAGGARD (1'45.082)**

Lap	Seg. 1	Seg. 2	Seg. 3	Seg. 4	Seg. 5	Lap Time	km/h	Local Time
		33.967	14.628	14.595	29.590		178.8	12:47'11.710
1	23.958	30.508	13.409	13.173	27.833	1'48.881	214.7	12:49'00.591
2	23.083	29.481	13.402	13.032	27.321	1'46.319	217.7	12:50'46.910
3	<b>22.567</b>	<b>28.950</b>	<b>13.100</b>	13.338	<b>27.127</b>	<b>1'45.082</b>	213.4	12:52'31.992
4	23.043	29.201	13.192	12.979	28.703	1'47.118	218.6	12:54'19.110
5	23.293	29.865	13.360	13.221	27.793	1'47.532	211.4	12:56'06.642
6	22.736	29.515	13.213	<b>12.957</b>	30.321	1'48.742 P	<b>219.1</b>	12:57'55.384

**26° 912 M. HAMBRO (1'45.525)**

Lap	Seg. 1	Seg. 2	Seg. 3	Seg. 4	Seg. 5	Lap Time	km/h	Local Time
		29.832	12.969	<b>12.795</b>	<b>27.558</b>		211.4	12:58'33.226
1	22.781	35.479	15.899	16.084	38.696	2'08.939 C	153.0	13:00'42.165
2	4'01.791	31.779	13.894	14.202	29.300	5'30.966 P	198.5	13:06'13.131
3	<b>23.140</b>	<b>28.514</b>	12.951	13.346	27.574	<b>1'45.525</b>	<b>214.3</b>	13:07'58.656
4	23.612	28.927	<b>12.880</b>	13.232	27.965	1'46.616	208.1	13:09'45.272
5	24.142	28.939	13.080	13.515	28.365	1'48.041	204.9	13:11'33.313

**27° 88 R. ROONEY (1'45.911)**

Lap	Seg. 1	Seg. 2	Seg. 3	Seg. 4	Seg. 5	Lap Time	km/h	Local Time
		33.164	14.669	14.583	29.705		208.5	12:47'19.791
1	24.286	31.957	14.134	14.075	28.925	1'53.377	208.9	12:49'13.168
2	24.560	30.182	13.931	13.741	28.210	1'50.624	205.7	12:51'03.792
3	23.265	28.791	13.469	13.392	27.913	1'46.830	213.4	12:52'50.622
4	<b>22.861</b>	<b>28.474</b>	<b>13.344</b>	<b>13.208</b>	28.024	<b>1'45.911</b>	<b>214.7</b>	12:54'36.533
5	23.345	28.663	13.432	13.524	27.993	1'46.957	208.1	12:56'23.490
6	23.462	28.638	13.915	13.542	32.032	1'51.589 P	197.8	12:58'15.079
7	6'27.336	30.654	13.807	13.254	28.327	7'53.378 P	208.1	13:06'08.457
8	23.344	30.529	13.995	13.647	27.879	1'49.394	206.5	13:07'57.851
9	23.168	28.908	13.566	13.228	28.202	1'47.072	208.1	13:09'44.923
10	23.580	29.235	13.409	13.273	<b>27.812</b>	1'47.309	211.8	13:11'32.232

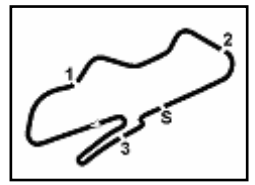
**28° 71 W. PEARCE (1'45.918)**

Lap	Seg. 1	Seg. 2	Seg. 3	Seg. 4	Seg. 5	Lap Time	km/h	Local Time
		34.546	14.125	14.220	30.432		218.6	12:47'13.325
1	24.267	29.401	13.356	13.685	28.343	1'49.052	219.1	12:49'02.377
2	<b>22.884</b>	29.259	<b>13.169</b>	13.336	27.314	1'45.962	<b>223.6</b>	12:50'48.339
3	23.627	<b>28.848</b>	13.299	<b>12.923</b>	<b>27.221</b>	<b>1'45.918</b>	222.7	12:52'34.257
4	23.859	30.311	13.420	13.692	31.678	1'52.960 P	214.7	12:54'27.217

P = Pits In/Out - C = Lap-Time Cancelled

These data/results cannot be reproduced, stored and/or transmitted in whole or in part by any manner of electronic, mechanical, photocopying, recording, broadcasting or otherwise now known or herein after developed without the previous express consent by the copyright owner, except for reproduction in daily press and regular printed publications on sale to the public within 60 days of the event related to those data/results and always provided that copyright symbol appears together as follows below.

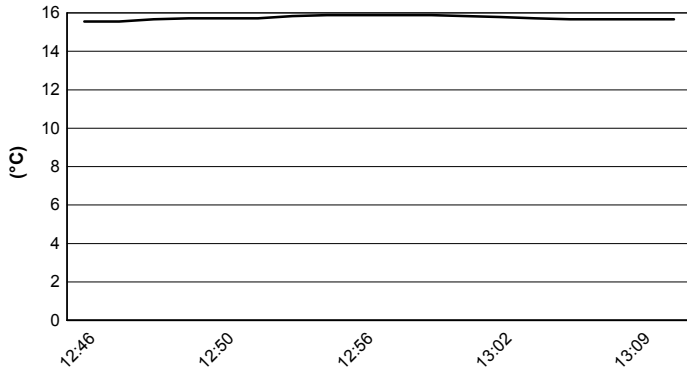
© DORNA WSBK ORGANIZATION Srl 2016



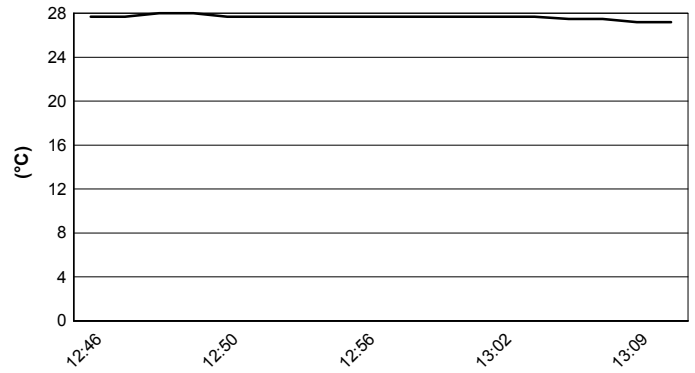
Session started 12:45

Session ended 13:12

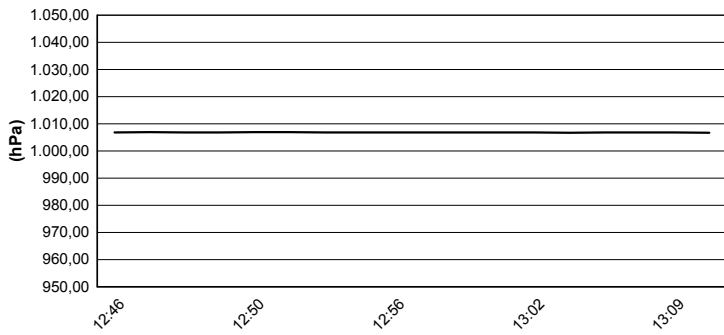
### Air Temperature



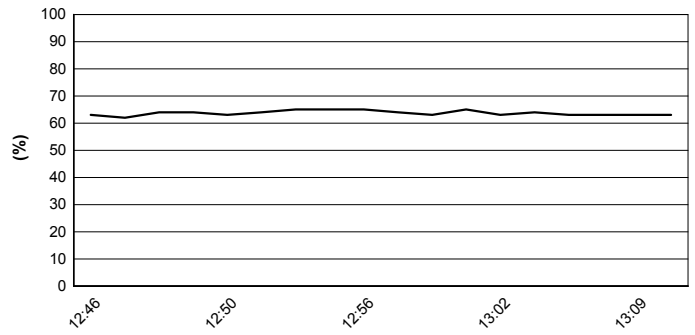
### Track Temperature



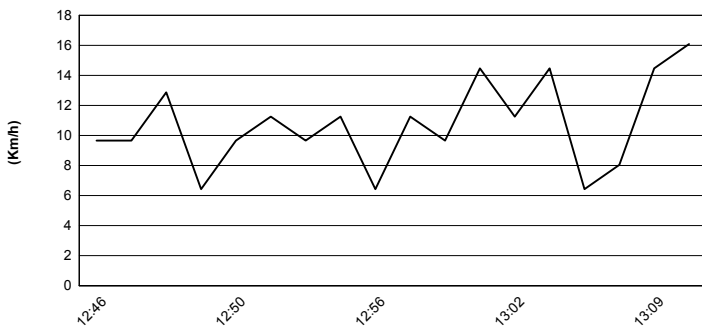
### Air Pressure



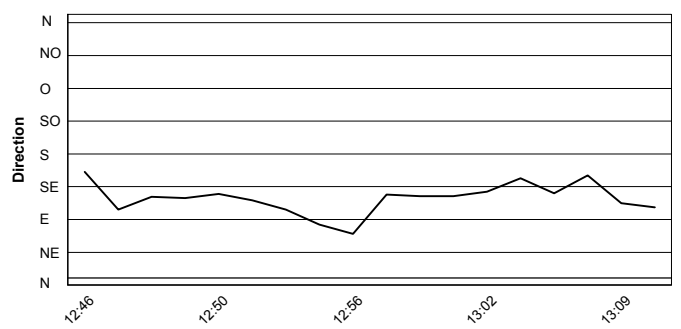
### Humidity



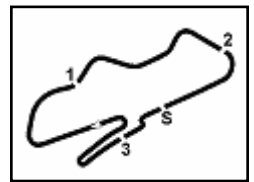
### Wind Speed



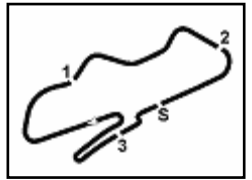
### Wind Direction



These data/results cannot be reproduced, stored and/or transmitted in whole or in part by any manner of electronic, mechanical, photocopying, recording, broadcasting or otherwise now known or herein after developed without the previous express consent by the copyright owner, except for reproduction in daily press and regular printed publications on sale to the public within 60 days of the event related to those data/results and always provided that copyright symbol appears together as follows below.  
© DORNA WSBK ORGANIZATION Srl 2016



No.	Rider	Team	Bike	Class
1	<b>2 MORRIS</b> Leon (GBR)	Carl Cox Motorsport/P&H Motorcycle	Ducati 899	
2	<b>5 MIDDLEMAS</b> Sam (GBR)	Salus/Albany	Ducati 899	
3	<b>6 HASLER</b> Peter (GBR)	AOR/ZERO	Ducati 899	
4	<b>7 ATKINSON</b> Phil (RSA)	Highsparks Motorsport	Ducati 899	
5	<b>10 NEARY</b> Sean (GBR)	Zoek Racing Team	Ducati 899	
6	<b>11 DAWSON</b> Louis (GBR)	Ducati Wolverhampton	Ducati 899	
7	<b>13 GUIVER</b> Rob (GBR)	Hyside Motorcycles	Ducati 899	
8	<b>14 KING</b> Loris (GBR)	RK Corse	Ducati 899	
9	<b>15 WAGHORN</b> Jon (GBR)	JW Smart Services Ltd / Laguna Mot	Ducati 899	
10	<b>16 MASON</b> Jake (GBR)	Hyside Motorcycles/Jimmy Mann Ra	Ducati 899	
11	<b>17 STEVENS</b> Carl (GBR)	Freeman Harris Solicitors	Ducati 899	
12	<b>21 CHEETHAM</b> Mark (GBR)	Highsparks Motorsport	Ducati 899	
13	<b>22 MACKAY</b> Dave (GBR)	True Heroes Racing/Laguna	Ducati 899	
14	<b>23 FOSTER</b> Adam (GBR)	FS Racing	Ducati 899	
15	<b>27 SKINNER</b> Taryn (GBR)	FS Racing	Ducati 899	
16	<b>28 BROADWAY</b> Ben (GBR)	BBR	Ducati 899	
17	<b>34 WADDELOW</b> Steph (GBR)	Highsparks Motorsport	Ducati 899	
18	<b>41 FERNS</b> David (GBR)	Team DFR	Ducati 899	
19	<b>42 CURRIE</b> Craig (GBR)	Zoek Racing Team	Ducati 899	
20	<b>43 BROWN</b> Robbie (GBR)	Boast Plumbing	Ducati 899	
21	<b>44 FAGAN</b> Alastair (GBR)	P&H Motorcycles/Carl Cox Motorspo	Ducati 899	
22	<b>48 WILSON</b> Nicky (GBR)	NWR (Nicky Wilson Racing)	Ducati 899	
23	<b>49 RAWSTHORNE</b> Tom (GBR)	JWF Motorsport	Ducati 899	
24	<b>57 RICHARDSON</b> Chris (GBR)	Silly racing	Ducati 899	
25	<b>61 GARROTE</b> Ricardo (ESP)	Realy Racing	Ducati 899	
26	<b>67 HUMPHRIES</b> Ross (GBR)	ross67racing	Ducati 899	
27	<b>69 COMPTON</b> Dijon (GBR)	AOR/ZERO	Ducati 899	
28	<b>71 PEARCE</b> Wesley (GBR)	777 racing/P&H Motorcycles	Ducati 899	
29	<b>75 HILL</b> Danny (GBR)	DHR	Ducati 899	
30	<b>77 RAILTON</b> Jonathan (GBR)	Boast Plumbing	Ducati 899	
31	<b>88 ROONEY</b> Rik (GBR)	Highsparks Motorsport	Ducati 899	
32	<b>98 JAGGARD</b> Keith (GBR)	Total Plant Ducati	Ducati 899	
33	<b>912 HAMBRO</b> Murray (GBR)	True Heroes Racing/Laguna	Ducati 899	



**Best Lap**

1	2 L. MORRIS	Ducati 899	1'35.403
2	13 R. GUIVER	Ducati 899	1'35.774
3	43 R. BROWN	Ducati 899	1'36.025
4	7 P. ATKINSON	Ducati 899	1'36.146
5	77 J. RAILTON	Ducati 899	1'36.296
6	11 L. DAWSON	Ducati 899	1'36.742
7	41 D. FERNS	Ducati 899	1'37.183
8	42 C. CURRIE	Ducati 899	1'37.325
9	21 M. CHEETHAM	Ducati 899	1'37.747
10	67 R. HUMPHRIES	Ducati 899	1'37.929
11	48 N. WILSON	Ducati 899	1'38.493
12	5 S. MIDDLEMAS	Ducati 899	1'38.972
13	75 D. HILL	Ducati 899	1'39.495
14	15 J. WAGHORN	Ducati 899	1'39.730
15	27 T. SKINNER	Ducati 899	1'39.960
16	28 B. BROADWAY	Ducati 899	1'40.666
17	23 A. FOSTER	Ducati 899	1'41.345
18	49 T. RAWSTHORNE	Ducati 899	1'41.546
19	22 D. MACKAY	Ducati 899	1'41.657
20	16 J. MASON	Ducati 899	1'42.002
21	34 S. WADDELOW	Ducati 899	1'42.803
22	69 D. COMPTON	Ducati 899	1'42.995
23	17 C. STEVENS	Ducati 899	1'43.014
24	14 L. KING	Ducati 899	1'43.602
25	98 K. JAGGARD	Ducati 899	1'45.082
26	912 M. HAMBRO	Ducati 899	1'45.525
27	88 R. ROONEY	Ducati 899	1'45.911
28	71 W. PEARCE	Ducati 899	1'45.918
29	57 C. RICHARDSON	Ducati 899	
30	44 A. FAGAN	Ducati 899	
31	10 S. NEARY	Ducati 899	
32	6 P. HASLER	Ducati 899	
33	61 R. GARROTE	Ducati 899	

**Top Speeds**

1	13 R. GUIVER	Ducati 899	237.9
2	7 P. ATKINSON	Ducati 899	236.8
3	11 L. DAWSON	Ducati 899	236.8
4	2 L. MORRIS	Ducati 899	236.3
5	43 R. BROWN	Ducati 899	233.8
6	48 N. WILSON	Ducati 899	233.8
7	27 T. SKINNER	Ducati 899	233.3
8	21 M. CHEETHAM	Ducati 899	232.3
9	42 C. CURRIE	Ducati 899	231.8
10	16 J. MASON	Ducati 899	231.8
11	75 D. HILL	Ducati 899	231.3
12	41 D. FERNS	Ducati 899	231.3
13	17 C. STEVENS	Ducati 899	229.8
14	67 R. HUMPHRIES	Ducati 899	229.8
15	69 D. COMPTON	Ducati 899	229.3
16	77 J. RAILTON	Ducati 899	229.3
17	34 S. WADDELOW	Ducati 899	229.3
18	5 S. MIDDLEMAS	Ducati 899	228.3
19	28 B. BROADWAY	Ducati 899	227.8
20	14 L. KING	Ducati 899	227.8
21	23 A. FOSTER	Ducati 899	227.4
22	49 T. RAWSTHORNE	Ducati 899	225.9
23	15 J. WAGHORN	Ducati 899	225.5
24	71 W. PEARCE	Ducati 899	223.6
25	22 D. MACKAY	Ducati 899	222.2
26	98 K. JAGGARD	Ducati 899	219.1
27	88 R. ROONEY	Ducati 899	214.7
28	912 M. HAMBRO	Ducati 899	214.3

Seg. 1			Seg. 2			Seg. 3			Seg. 4			Seg. 5		
1	13 R. GUIVER	20.379	1	2 L. MORRIS	26.077	1	13 R. GUIVER	12.191	1	2 L. MORRIS	11.598	1	2 L. MORRIS	24.896
2	2 L. MORRIS	20.568	2	13 R. GUIVER	26.082	2	7 P. ATKINSON	12.196	2	43 R. BROWN	11.623	2	43 R. BROWN	25.039
3	7 P. ATKINSON	20.628	3	77 J. RAILTON	26.132	3	2 L. MORRIS	12.229	3	7 P. ATKINSON	11.625	3	21 M. CHEETHAM	25.042
4	43 R. BROWN	20.755	4	7 P. ATKINSON	26.194	4	11 L. DAWSON	12.283	4	77 J. RAILTON	11.648	4	13 R. GUIVER	25.113
5	77 J. RAILTON	20.789	5	43 R. BROWN	26.262	5	41 D. FERNS	12.320	5	13 R. GUIVER	11.667	5	77 J. RAILTON	25.124
6	11 L. DAWSON	20.862	6	41 D. FERNS	26.266	6	43 R. BROWN	12.346	6	41 D. FERNS	11.734	6	7 P. ATKINSON	25.183
7	42 C. CURRIE	20.901	7	11 L. DAWSON	26.293	7	67 R. HUMPHRIES	12.405	7	11 L. DAWSON	11.812	7	11 L. DAWSON	25.347
8	67 R. HUMPHRIES	20.993	8	42 C. CURRIE	26.405	8	77 J. RAILTON	12.428	8	42 C. CURRIE	11.830	8	41 D. FERNS	25.411
9	21 M. CHEETHAM	21.100	9	67 R. HUMPHRIES	26.508	9	21 M. CHEETHAM	12.448	9	21 M. CHEETHAM	11.936	9	42 C. CURRIE	25.413
10	41 D. FERNS	21.132	10	21 M. CHEETHAM	26.565	10	48 N. WILSON	12.496	10	27 T. SKINNER	12.045	10	15 J. WAGHORN	25.587
11	15 J. WAGHORN	21.298	11	48 N. WILSON	26.666	11	42 C. CURRIE	12.514	11	75 D. HILL	12.057	11	27 T. SKINNER	25.656
12	48 N. WILSON	21.361	12	5 S. MIDDLEMAS	26.763	12	15 J. WAGHORN	12.553	12	67 R. HUMPHRIES	12.099	12	5 S. MIDDLEMAS	25.693
13	5 S. MIDDLEMAS	21.402	13	75 D. HILL	26.833	13	5 S. MIDDLEMAS	12.589	13	16 J. MASON	12.119	13	48 N. WILSON	25.702
14	75 D. HILL	21.558	14	15 J. WAGHORN	26.892	14	75 D. HILL	12.601	14	5 S. MIDDLEMAS	12.137	14	67 R. HUMPHRIES	25.761
15	28 B. BROADWAY	21.631	15	28 B. BROADWAY	27.375	15	28 B. BROADWAY	12.649	15	48 N. WILSON	12.199	15	75 D. HILL	25.988
16	27 T. SKINNER	21.645	16	23 A. FOSTER	27.445	16	27 T. SKINNER	12.652	16	23 A. FOSTER	12.250	16	49 T. RAWSTHORNE	26.031
17	16 J. MASON	21.758	17	49 T. RAWSTHORNE	27.576	17	16 J. MASON	12.710	17	15 J. WAGHORN	12.369	17	16 J. MASON	26.192
18	22 D. MACKAY	21.883	18	27 T. SKINNER	27.607	18	22 D. MACKAY	12.721	18	17 C. STEVENS	12.399	18	28 B. BROADWAY	26.242
19	49 T. RAWSTHORNE	21.888	19	22 D. MACKAY	27.792	19	34 S. WADDELOW	12.744	19	69 D. COMPTON	12.416	19	23 A. FOSTER	26.318
20	23 A. FOSTER	21.955	20	14 L. KING	28.031	20	23 A. FOSTER	12.808	20	28 B. BROADWAY	12.423	20	22 D. MACKAY	26.450
21	34 S. WADDELOW	22.041	21	16 J. MASON	28.130	21	912 M. HAMBRO	12.880	21	49 T. RAWSTHORNE	12.447	21	14 L. KING	26.480
22	17 C. STEVENS	22.136	22	17 C. STEVENS	28.135	22	69 D. COMPTON	12.912	22	34 S. WADDELOW	12.518	22	69 D. COMPTON	26.768
23	14 L. KING	22.394	23	34 S. WADDELOW	28.217	23	49 T. RAWSTHORNE	12.916	23	22 D. MACKAY	12.613	23	34 S. WADDELOW	26.968
24	69 D. COMPTON	22.470	24	69 D. COMPTON	28.261	24	17 C. STEVENS	12.954	24	912 M. HAMBRO	12.795	24	17 C. STEVENS	26.969
25	98 K. JAGGARD	22.567	25	88 R. ROONEY	28.474	25	14 L. KING	13.046	25	71 W. PEARCE	12.923	25	98 K. JAGGARD	27.127
26	88 R. ROONEY	22.861	26	912 M. HAMBRO	28.514	26	98 K. JAGGARD	13.100	26	98 K. JAGGARD	12.957	26	71 W. PEARCE	27.221
27	71 W. PEARCE	22.884	27	71 W. PEARCE	28.848	27	71 W. PEARCE	13.169	27	14 L. KING	12.981	27	912 M. HAMBRO	27.558
28	912 M. HAMBRO	23.140	28	98 K. JAGGARD	28.950	28	88 R. ROONEY	13.344	28	88 R. ROONEY	13.208	28	88 R. ROONEY	27.812