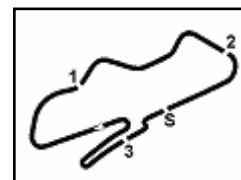


# UK Round, 27-28-29 May 2016

## Ducati TriOptions Cup - Results Qualifying



Donington Park 4.023 m

Best Lap = 1'34.938 - 4,023 km - Avg 152,550 km/h

No.	Rider	Nat	Team	Bike	Time	Gap	Rel.	Laps
1	<b>2 MORRIS</b> Leon	GBR	Carl Cox Motorsport/P&H Motorcycle	Ducati 899	<b>1'34.938</b>			6
2	<b>43 BROWN</b> Robbie	GBR	Boast Plumbing	Ducati 899	<b>1'35.499</b>	0.561	0.561	8
3	<b>10 NEARY</b> Sean	GBR	Zoek Racing Team	Ducati 899	<b>1'35.567</b>	0.629	0.068	10
4	<b>7 ATKINSON</b> Phil	RSA	Highsparks Motorsport	Ducati 899	<b>1'35.609</b>	0.671	0.042	10
5	<b>13 GUIVER</b> Rob	GBR	Hyside Motorcycles	Ducati 899	<b>1'35.659</b>	0.721	0.050	9
6	<b>11 DAWSON</b> Louis	GBR	Ducati Wolverhampton	Ducati 899	<b>1'35.769</b>	0.831	0.110	11
7	<b>77 RAILTON</b> Jonathan	GBR	Boast Plumbing	Ducati 899	<b>1'35.789</b>	0.851	0.020	11
8	<b>21 CHEETHAM</b> Mark	GBR	Highsparks Motorsport	Ducati 899	<b>1'36.432</b>	1.494	0.643	10
9	<b>41 FERNS</b> David	GBR	Team DFR	Ducati 899	<b>1'36.563</b>	1.625	0.131	10
10	<b>42 CURRIE</b> Craig	GBR	Zoek Racing Team	Ducati 899	<b>1'37.283</b>	2.345	0.720	7
11	<b>5 MIDDLEMAS</b> Sam	GBR	Salus/Albany	Ducati 899	<b>1'37.388</b>	2.450	0.105	10
12	<b>15 WAGHORN</b> Jon	GBR	JW Smart Services Ltd / Laguna Mott	Ducati 899	<b>1'38.090</b>	3.152	0.702	9
13	<b>75 HILL</b> Danny	GBR	DHR	Ducati 899	<b>1'38.520</b>	3.582	0.430	11
14	<b>48 WILSON</b> Nicky	GBR	NWR (Nicky Wilson Racing)	Ducati 899	<b>1'38.525</b>	3.587	0.005	10
15	<b>67 HUMPHRIES</b> Ross	GBR	ross67racing	Ducati 899	<b>1'38.884</b>	3.946	0.359	7
16	<b>16 MASON</b> Jake	GBR	Hyside Motorcycles/Jimmy Mann Rac	Ducati 899	<b>1'38.943</b>	4.005	0.059	11
17	<b>27 SKINNER</b> Taryn	GBR	FS Racing	Ducati 899	<b>1'39.200</b>	4.262	0.257	10
18	<b>49 RAWSTHORNE</b> Tom	GBR	JWF Motorsport	Ducati 899	<b>1'40.058</b>	5.120	0.858	11
19	<b>34 WADDELOW</b> Steph	GBR	Highsparks Motorsport	Ducati 899	<b>1'40.106</b>	5.168	0.048	10
20	<b>6 HASLER</b> Peter	GBR	AOR/ZERO	Ducati 899	<b>1'40.242</b>	5.304	0.136	11
21	<b>28 BROADWAY</b> Ben	GBR	BBR	Ducati 899	<b>1'40.578</b>	5.640	0.336	9
22	<b>69 COMPTON</b> Dijon	GBR	AOR/ZERO	Ducati 899	<b>1'41.026</b>	6.088	0.448	10
23	<b>23 FOSTER</b> Adam	GBR	FS Racing	Ducati 899	<b>1'41.231</b>	6.293	0.205	11
24	<b>71 PEARCE</b> Wesley	GBR	777 racing/P&H Motorcycles	Ducati 899	<b>1'43.026</b>	8.088	1.795	9
25	<b>14 KING</b> Loris	GBR	RK Corse	Ducati 899	<b>1'43.183</b>	8.245	0.157	10
26	<b>912 HAMBRO</b> Murray	GBR	True Heroes Racing/Laguna	Ducati 899	<b>1'43.515</b>	8.577	0.332	11
----- Not Qualified -----								
NQ	<b>98 JAGGARD</b> Keith	GBR	Total Plant Ducati	Ducati 899	<b>1'46.524</b>	11.586	3.009	6
NQ	<b>88 ROONEY</b> Rik	GBR	Highsparks Motorsport	Ducati 899	<b>1'46.853</b>	11.915	0.329	10
NQ	<b>17 STEVENS</b> Carl	GBR	Freeman Harris Solicitors	Ducati 899				0
NQ	<b>22 MACKAY</b> Dave	GBR	True Heroes Racing/Laguna	Ducati 899				0

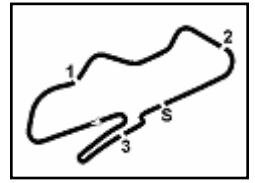
Qualifying Lap Time (110% of 1'34.938): 1'44.433

N. 71 (Pearce) Check the Transponder

Humidity:	63%	AIR	16°C
Condition:	Dry	Temp:	27°C

27/05/2016 Start 18:56 End 19:18

The results are provisional until the end of the time limit for protests and appeals and the completion of the technical checks.



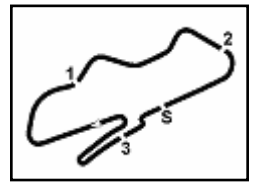
1	2 MORRIS L. 1'34.938	43 BROWN R. 1'35.499	10 NEARY S. 1'35.567
2	7 ATKINSON P. 1'35.609	13 GUIVER R. 1'35.659	11 DAWSON L. 1'35.769
3	77 RAILTON J. 1'35.789	21 CHEETHAM M. 1'36.432	41 FERNS D. 1'36.563
4	42 CURRIE C. 1'37.283	5 MIDDLEMAS S. 1'37.388	15 WAGHORN J. 1'38.090
5	75 HILL D. 1'38.520	48 WILSON N. 1'38.525	67 HUMPHRIES R. 1'38.884
6	16 MASON J. 1'38.943	27 SKINNER T. 1'39.200	49 RAWSTHORNE T. 1'40.058
7	34 WADDELOW S. 1'40.106	6 HASLER P. 1'40.242	28 BROADWAY B. 1'40.578
8	69 COMPTON D. 1'41.026	23 FOSTER A. 1'41.231	71 PEARCE W. 1'43.026
9	14 KING L. 1'43.183	912 HAMBRO M. 1'43.515	98 JAGGARD K. 1'46.524
10	88 ROONEY R. 1'46.853	22 MACKAY D.	

Jury President .....

..... Race Director

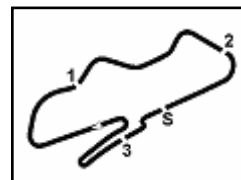
These data/results cannot be reproduced, stored and/or transmitted in whole or in part by any manner of electronic, mechanical, photocopying, recording, broadcasting or otherwise now known or herein after developed without the previous express consent by the copyright owner, except for reproduction in daily press and regular printed publications on sale to the public within 60 days of the event related to those data/results and always provided that copyright symbol appears together as follows below.

© DORNA WSBK ORGANIZATION Srl 2016



Donington Park 4.023 m

No.	Rider	Nat	Bike	Seg. 1	Seg. 2	Seg. 3	Seg. 4	Seg. 5	Ideal Time	Lap Time	Pos.	Diff.
1	2 L. MORRIS	GBR	Ducati 899	20.505	25.924	<b>12.095</b>	11.607	<b>24.558</b>	<b>1'34.689</b>	1'34.938	3	0.249
2	43 R. BROWN	GBR	Ducati 899	20.598	26.016	12.187	<b>11.467</b>	24.993	<b>1'35.261</b>	1'35.499	4	0.238
3	13 R. GUIVER	GBR	Ducati 899	<b>20.311</b>	26.044	12.117	11.717	25.119	<b>1'35.308</b>	1'35.659	7	0.351
4	10 S. NEARY	GBR	Ducati 899	20.531	<b>25.765</b>	12.191	11.711	25.132	<b>1'35.330</b>	1'35.567	5	0.237
5	7 P. ATKINSON	RSA	Ducati 899	20.536	26.293	12.175	11.532	24.820	<b>1'35.356</b>	1'35.609	6	0.253
6	77 J. RAILTON	GBR	Ducati 899	20.646	26.095	12.359	11.632	24.927	<b>1'35.659</b>	1'35.789	9	0.130
7	11 L. DAWSON	GBR	Ducati 899	20.572	26.130	12.180	11.620	25.172	<b>1'35.674</b>	1'35.769	8	0.095
8	41 D. FERNS	GBR	Ducati 899	20.888	26.032	12.141	11.661	25.185	<b>1'35.907</b>	1'36.563	11	0.656
9	21 M. CHEETHAM	GBR	Ducati 899	20.709	26.260	12.226	11.727	25.152	<b>1'36.074</b>	1'36.432	10	0.358
10	5 S. MIDDLEMAS	GBR	Ducati 899	20.957	26.424	12.340	11.871	25.537	<b>1'37.129</b>	1'37.388	13	0.259
11	42 C. CURRIE	GBR	Ducati 899	20.963	26.541	12.468	11.911	25.390	<b>1'37.273</b>	1'37.283	12	0.010
12	15 J. WAGHORN	GBR	Ducati 899	21.198	26.954	12.489	12.032	25.341	<b>1'38.014</b>	1'38.090	14	0.076
13	75 D. HILL	GBR	Ducati 899	21.262	26.896	12.454	11.826	25.685	<b>1'38.123</b>	1'38.520	15	0.397
14	48 N. WILSON	GBR	Ducati 899	21.291	26.683	12.569	11.969	25.647	<b>1'38.159</b>	1'38.525	16	0.366
15	67 R. HUMPHRIES	GBR	Ducati 899	21.197	26.601	12.473	12.160	25.957	<b>1'38.388</b>	1'38.884	17	0.496
16	16 J. MASON	GBR	Ducati 899	21.314	27.327	12.432	11.939	25.795	<b>1'38.807</b>	1'38.943	18	0.136
17	27 T. SKINNER	GBR	Ducati 899	21.550	27.235	12.495	12.015	25.739	<b>1'39.034</b>	1'39.200	19	0.166
18	49 T. RAWSTHORNE	GBR	Ducati 899	21.465	27.504	12.802	12.077	25.613	<b>1'39.461</b>	1'40.058	20	0.597
19	6 P. HASLER	GBR	Ducati 899	21.713	27.084	12.670	12.235	25.853	<b>1'39.555</b>	1'40.242	22	0.687
20	34 S. WADDELOW	GBR	Ducati 899	21.547	27.546	12.512	12.047	26.186	<b>1'39.838</b>	1'40.106	21	0.268
21	28 B. BROADWAY	GBR	Ducati 899	21.587	27.377	12.730	12.323	26.158	<b>1'40.175</b>	1'40.578	23	0.403
22	69 D. COMPTON	GBR	Ducati 899	21.811	27.735	12.908	12.210	25.909	<b>1'40.573</b>	1'41.026	24	0.453
23	23 A. FOSTER	GBR	Ducati 899	21.775	27.617	12.720	12.258	26.233	<b>1'40.603</b>	1'41.231	25	0.628
24	14 L. KING	GBR	Ducati 899	22.125	27.858	12.886	12.475	26.732	<b>1'42.076</b>	1'43.183	27	1.107
25	71 W. PEARCE	GBR	Ducati 899	22.144	27.979	12.797	12.875	26.686	<b>1'42.481</b>	1'43.026	26	0.545
26	912 M. HAMBRO	GBR	Ducati 899	22.321	28.427	12.761	12.539	26.654	<b>1'42.702</b>	1'43.515	28	0.813
27	98 K. JAGGARD	GBR	Ducati 899	22.752	29.451	13.141	13.008	27.277	<b>1'45.629</b>	1'46.524	29	0.895
28	88 R. ROONEY	GBR	Ducati 899	22.891	28.749	13.411	12.990	27.848	<b>1'45.889</b>	1'46.853	30	0.964
<b>Overall Ideal Time</b>				20.311	25.765	12.095	11.467	24.558	<b>1'34.196</b>			



1° 2 L. MORRIS (1'34.938)								
Lap	Seg. 1	Seg. 2	Seg. 3	Seg. 4	Seg. 5	Lap Time	km/h	Local Time
1	21.667	32.781	13.486	13.221	27.719	1'39.092	210.9	18:58'40.356
2	20.601	26.148	12.095	11.607	25.000	1'35.451	235.8	19:01'54.899
3	22.108	30.131	12.855	12.691	29.842	1'47.627 P	218.2	19:03'42.526
4	9'01.180	29.480	13.339	12.754	25.771	10'22.524 P	220.4	19:14'05.050
5	<b>20.505</b>	<b>25.924</b>	12.104	11.847	<b>24.558</b>	<b>1'34.938</b>	<b>237.4</b>	19:15'39.988
6	21.434	28.393	13.260	13.381	26.785	1'43.253 P	213.4	19:17'23.241

2° 43 R. BROWN (1'35.499)								
Lap	Seg. 1	Seg. 2	Seg. 3	Seg. 4	Seg. 5	Lap Time	km/h	Local Time
1	21.405	30.075	15.955	13.719	26.690	1'38.924	<b>237.9</b>	18:58'20.348
2	20.732	26.464	12.274	11.616	26.244	1'37.330	236.3	18:59'59.272
3	20.624	26.961	12.322	11.541	25.094	1'36.542	234.3	19:03'13.144
4	20.612	26.330	12.316	11.475	25.124	1'35.857	234.8	19:04'49.001
5	20.890	28.113	12.811	12.931	25.930	1'40.675 P	221.3	19:06'29.676
6	5'37.340	28.411	13.088	11.899	25.782	6'56.520 P	233.3	19:13'26.196
7	<b>20.598</b>	<b>26.228</b>	<b>12.187</b>	<b>11.493</b>	<b>24.993</b>	<b>1'35.499</b>	<b>234.3</b>	19:15'01.695
8	20.817	<b>26.016</b>	<b>12.224</b>	<b>11.467</b>	<b>25.080</b>	1'35.604	236.3	19:16'37.299

3° 10 S. NEARY (1'35.567)								
Lap	Seg. 1	Seg. 2	Seg. 3	Seg. 4	Seg. 5	Lap Time	km/h	Local Time
1	21.215	30.125	13.461	12.855	26.915	1'39.535	<b>231.8</b>	18:58'17.799
2	20.718	27.565	12.746	12.423	25.586	1'36.246	<b>231.8</b>	18:59'57.334
3	20.590	26.136	12.249	11.741	25.241	1'35.957	229.8	19:03'09.537
4	20.574	25.941	12.390	11.799	27.741	1'38.445 P	231.3	19:04'47.982
5	2'51.123	27.539	12.523	12.004	25.501	4'08.690 P	225.5	19:08'56.672
6	20.562	25.793	12.236	11.784	25.192	1'35.567	230.8	19:10'32.329
7	<b>20.531</b>	26.291	12.281	11.711	25.212	1'36.026	230.8	19:12'08.265
8	20.538	25.880	<b>12.191</b>	11.838	25.703	1'36.150	231.3	19:13'44.415
9	20.579	27.460	12.790	12.069	25.473	1'38.371	226.4	19:15'22.786
10	20.537	<b>25.765</b>	12.294	11.792	26.049	1'36.437	230.8	19:16'59.223

4° 7 P. ATKINSON (1'35.609)								
Lap	Seg. 1	Seg. 2	Seg. 3	Seg. 4	Seg. 5	Lap Time	km/h	Local Time
1	20.887	27.999	12.495	12.222	25.736	1'36.642	235.3	18:57'42.707
2	20.671	26.640	12.296	11.763	25.056	1'36.642	234.3	18:59'19.349
3	20.726	26.471	12.188	11.708	25.005	1'36.107	235.3	19:00'55.456
4	20.597	<b>26.293</b>	<b>12.175</b>	11.628	24.983	1'35.676	<b>235.8</b>	19:04'07.179
5	<b>20.536</b>	26.294	12.184	11.616	25.066	1'35.696	<b>235.8</b>	19:05'42.875
6	20.632	26.504	12.280	11.665	25.355	1'36.436 P	234.3	19:07'19.311
7	4'05.937	27.032	12.315	11.960	25.163	5'22.407 P	234.3	19:12'41.718
8	20.983	26.390	12.284	<b>11.532</b>	<b>24.820</b>	1'35.609	234.8	19:14'17.327
9	20.802	26.583	12.394	11.676	25.154	1'36.609	234.8	19:15'53.936
10	20.614	28.948	14.387	13.160	27.884	1'44.993 P	190.5	19:17'38.929

5° 13 R. GUIVER (1'35.659)								
Lap	Seg. 1	Seg. 2	Seg. 3	Seg. 4	Seg. 5	Lap Time	km/h	Local Time
1	21.658	29.409	12.762	12.762	26.214	1'39.217	234.8	18:57'52.704
2	20.584	26.595	12.208	11.970	25.406	1'36.763	236.8	19:01'08.684
3	20.411	26.136	12.187	11.764	25.471	1'35.969	234.8	19:02'44.653
4	20.674	27.154	13.773	12.893	24.562	1'39.056 P	208.9	19:04'23.709
5	2'41.221	27.568	12.364	12.185	25.363	3'58.701 P	234.8	19:08'22.410
6	2'18.565	28.275	12.404	12.108	25.704	3'37.056 P	236.8	19:11'59.466
7	20.896	26.589	12.141	11.822	25.695	1'37.143	<b>238.4</b>	19:13'36.609
8	<b>20.311</b>	26.355	<b>12.117</b>	11.757	<b>25.119</b>	<b>1'35.659</b>	<b>234.8</b>	19:15'12.268
9	20.619	<b>26.044</b>	12.201	11.717	25.257	1'35.838	235.8	19:16'48.106

6° 11 L. DAWSON (1'35.769)								
Lap	Seg. 1	Seg. 2	Seg. 3	Seg. 4	Seg. 5	Lap Time	km/h	Local Time
1	21.120	27.915	12.542	12.269	25.949	1'36.982	235.3	18:57'43.467
2	20.801	26.339	12.271	11.849	25.403	1'36.237	236.3	18:59'20.449
3	20.813	26.326	12.282	11.717	25.223	1'36.361	236.3	19:00'56.686
4	20.699	26.166	12.215	<b>11.620</b>	25.612	1'36.312	<b>238.4</b>	19:04'09.359
5	20.604	26.162	12.259	11.722	25.197	1'35.944	235.8	19:05'45.303
6	<b>20.572</b>	<b>26.130</b>	<b>12.180</b>	11.674	25.213	<b>1'35.769</b>	237.9	19:07'21.072
7	20.814	26.199	12.331	11.812	24.917	1'36.073 P	234.8	19:08'57.145
8	1'44.139	27.289	12.464	11.950	25.743	3'01.585 P	232.8	19:11'58.730
9	21.076	26.659	12.335	11.781	26.301	1'38.152	235.8	19:13'36.882
10	20.689	26.388	12.339	11.887	25.291	1'36.594	236.3	19:15'13.476

P = Pits In/Out - C = Lap-Time Cancelled

These data/results cannot be reproduced, stored and/or transmitted in whole or in part by any manner of electronic, mechanical, photocopying, recording, broadcasting or otherwise now known or herein after developed without the previous express consent by the copyright owner, except for reproduction in daily press and regular printed publications on sale to the public within 60 days of the event related to those data/results and always provided that copyright symbol appears together as follows below.

© DORNA WSBK ORGANIZATION Srl 2016

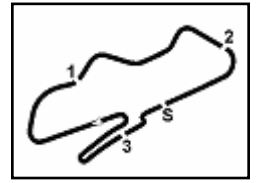
11	21.121	26.712	12.432	11.968	25.441	1'37.674	234.3	19:16'51.150
----	--------	--------	--------	--------	--------	----------	-------	--------------

7° 77 J. RAILTON (1'35.789)								
Lap	Seg. 1	Seg. 2	Seg. 3	Seg. 4	Seg. 5	Lap Time	km/h	Local Time
1	21.122	28.074	12.868	12.509	25.900	1'36.948	<b>225.0</b>	18:57'43.163
2	20.697	26.446	12.425	11.765	25.190	1'36.357	<b>231.8</b>	18:59'20.111
3	20.812	26.197	12.377	11.687	25.025	1'36.198	231.3	19:00'56.468
4	20.668	<b>26.095</b>	<b>12.359</b>	<b>11.632</b>	25.532	1'36.286	<b>231.8</b>	19:02'32.666
5	<b>20.646</b>	26.186	12.390	11.640	<b>24.927</b>	<b>1'35.789</b>	230.8	19:04'08.952
6	20.722	26.166	12.362	11.638	24.277	1'35.165 P	230.8	19:05'44.741
7	1'39.380	27.252	12.564	12.391	25.659	2'57.246 P	231.3	19:07'19.906
8	20.921	26.252	12.368	11.685	24.983	1'36.209	230.3	19:10'17.152
9	21.624	26.508	12.495	11.735	25.019	1'37.381	230.8	19:11'53.361
10	21.012	26.303	12.387	11.725	25.263	1'36.690	229.8	19:13'30.742
11	20.751	26.144	12.482	11.745	25.153	1'36.275	230.3	19:15'07.432

8° 21 M. CHEETHAM (1'36.432)								
Lap	Seg. 1	Seg. 2	Seg. 3	Seg. 4	Seg. 5	Lap Time	km/h	Local Time
1	21.100	28.602	12.695	12.232	25.966	1'38.721	224.5	18:57'44.764
2	21.006	26.296	<b>12.226</b>	11.816	25.639	1'36.983	<b>230.8</b>	18:59'23.485
3	20.899	26.410	12.274	11.806	25.570	1'36.959	231.8	19:01'00.468
4	21.104	26.618	12.366	11.932	25.535	1'37.555	229.3	19:02'37.427
5	20.869	26.326	12.354	12.037	25.345	1'36.931	229.3	19:04'14.982
6	20.914	<b>26.260</b>	12.379	<b>11.727</b>	<b>25.152</b>	<b>1'36.432</b>	229.3	19:05'51.913
7	22.990	27.092	12.481	11.973	31.669	1'46.205 P	228.3	19:07'28.345
8	3'02.171	28.084	12.466	12.243	25.946	4'20.910 P	228.8	19:09'14.550
9	21.043	27.279	12.425	11.897	27.214	1'39.858	227.4	19:13'35.460
10	<b>20.709</b>	26.389	12.398	12.182	25.598	1'37.276	218.6	19:15'15.318

9° 41 D. FERNS (1'36.563)								
Lap	Seg. 1	Seg. 2	Seg. 3	Seg. 4	Seg. 5	Lap Time	km/h	Local Time
1	21.423	28.985	12.608	12.328	26.750	1'37.530	230.8	18:57'45.378
2	20.891	26.469	<b>12.141</b>	11.882	25.615	1'36.563	<b>234.8</b>	18:59'22.908
3	2'41.640	29.060	12.572	12.422	25.715	4'01.409 P	230.8	19:01'03.609
4	20.944	26.296	12.303	11.766	25.483	1'36.792	230.8	19:05'05.018
5	21.012	27.630	12.362	11.818	25.413	1'38.235	231.3	19:06'41.810
6	21.029	26.267	12.346	11.736	<b>25.185</b>	<b>1'36.563</b>	231.8	19:08'20.045
7	<b>20.888</b>	26.102	12.197	11.829	25.587	1'36.603	234.3	19:09'56.608
8	25.842	32.994	13.402	12.257	25.764	1'50.259	221.3	19:11'33.211
9	21.005	<b>26.032</b>	12.271	11.844	25.628	1'36.780	232.8	19:13'23.470
10	20.919	26.089	12.198	<b>11.661</b>	25.792	1'36.659	234.3	19:15'00.250

10° 42 C. CURRIE (1'37.283)								
Lap	Seg. 1	Seg. 2	Seg. 3	Seg. 4	Seg. 5	Lap Time	km/h	Local Time
1	22.167	32.828	13.982	13.719	28.795	1'44.458	216.0	18:58'28.012
2	21.401	28.517	13.000	12.475	28.299	1'44.458	<b>231.8</b>	19:00'12.470
3	23.511	27.179	12.547	12.303	25.971	1'39.401	<b>231.8</b>	19:01'51.871
4	21.075	32.629	15.531	15.212	28.875	1'55.758	230.8	19:03'47.629
5	21.075	26.781	12.487	<b>11.911</b>	26.099	1'38.353	<b>231.8</b>	19:05'25.982
6	21.093	26.678	13.263	12.636	26.158	1'39.828	220.9	19:07'05.810
7	<b>20.963</b>	<b>26.541</b>	<b>12.468</b>	11.921	<b>25.390</b>			



Donington Park 4.023 m

5	21.312	<b>26.954</b>	12.521	12.068	<b>25.341</b>	1'38.196	222.7	19:06'09.490
6	21.690	28.815	12.930	12.592	29.705	1'45.732 P	213.9	19:07'55.222
7	4'22.192	28.280	12.667	12.171	26.789	5'42.099 P	221.3	19:13'37.321
8	21.487	27.371	12.692	<b>12.032</b>	25.349	1'38.931	222.2	19:15'16.252
9	<b>21.198</b>	26.956	12.490	12.037	25.409	<b>1'38.090</b>	<b>224.5</b>	19:16'54.342

13° 75 D. HILL (1'38.520)								
Lap	Seg. 1	Seg. 2	Seg. 3	Seg. 4	Seg. 5	Lap Time	km/h	Local Time
1	52.579	29.851	13.072	13.433	30.654	224.5	18:57'59.734	
2	21.566	27.771	12.800	11.997	26.263	2'11.410 P	230.8	19:00'11.144
3	21.377	27.314	<b>12.454</b>	13.178	37.896	1'52.219 P	233.3	19:03'43.041
4	56.616	27.139	12.819	11.989	25.810	2'14.373 P	228.8	19:05'57.414
5	21.442	27.084	12.696	12.269	25.759	1'39.250	230.3	19:07'36.664
6	21.597	27.235	12.767	12.146	26.026	1'39.771	229.8	19:09'16.435
7	21.667	27.349	12.672	12.073	25.836	1'39.597	231.3	19:10'56.032
8	21.560	27.008	12.537	12.211	25.792	1'39.108	230.8	19:12'35.140
9	<b>21.262</b>	27.040	12.573	12.030	<b>25.685</b>	1'38.590	231.8	19:14'13.730
10	21.289	26.946	12.559	11.859	25.983	1'38.636	231.8	19:15'52.366
11	21.501	<b>26.896</b>	12.601	<b>11.826</b>	25.696	<b>1'38.520</b>	230.3	19:17'30.886

14° 48 N. WILSON (1'38.525)								
Lap	Seg. 1	Seg. 2	Seg. 3	Seg. 4	Seg. 5	Lap Time	km/h	Local Time
1	21.899	30.645	13.538	13.282	27.798	226.9	18:57'53.422	
2	21.561	27.492	<b>12.569</b>	12.610	26.560	1'41.130	227.8	18:59'34.552
3	22.609	27.295	12.678	12.261	26.063	1'39.858	230.3	19:01'14.410
4	<b>21.291</b>	26.888	12.738	12.214	25.914	1'40.363	228.8	19:02'54.773
5	<b>21.684</b>	26.683	12.606	12.123	25.822	<b>1'38.525</b>	<b>230.8</b>	19:04'33.298
6	21.629	27.525	12.767	12.107	24.094	1'38.177 P	228.8	19:06'11.475
7	2'13.097	27.728	12.757	12.162	25.895	3'31.639 P	227.8	19:09'43.114
8	21.608	26.895	12.682	12.069	25.718	1'38.972	229.8	19:11'22.086
9	21.855	26.866	12.770	<b>11.969</b>	25.785	1'39.245	224.5	19:13'01.331
10	21.419	26.876	12.642	12.028	<b>25.647</b>	1'38.612	226.4	19:14'39.943
11	21.366	26.737	12.594	12.028	<b>25.859</b>	1'38.584	226.9	19:16'18.527

15° 67 R. HUMPHRIES (1'38.884)								
Lap	Seg. 1	Seg. 2	Seg. 3	Seg. 4	Seg. 5	Lap Time	km/h	Local Time
1	1'57.975	48.027	22.645	21.322	37.930			18:59'00.855
2	4'00.392	33.346	15.000	14.236	33.929	3'34.486 P	187.2	19:02'35.341
3	22.083	34.916	14.260	13.443	29.602	5'32.613 P	211.4	19:08'07.954
4	21.576	27.505	12.859	12.430	26.914	1'41.791	226.4	19:09'49.745
5	21.562	27.939	12.959	12.343	26.793	1'41.610	<b>231.8</b>	19:11'31.355
6	<b>21.197</b>	27.438	<b>12.473</b>	<b>12.160</b>	26.147	1'39.415	229.8	19:13'10.770
7	21.323	<b>26.601</b>	12.558	12.300	26.102	<b>1'38.884</b>	229.3	19:14'49.654
8	21.299	26.801	12.497	12.532	<b>25.957</b>	1'39.086	225.9	19:16'28.740

16° 16 J. MASON (1'38.943)								
Lap	Seg. 1	Seg. 2	Seg. 3	Seg. 4	Seg. 5	Lap Time	km/h	Local Time
1	22.804	32.564	14.168	13.801	28.523	218.6	18:57'57.773	
2	21.850	29.598	12.967	12.914	27.293	1'45.576	218.6	18:59'43.349
3	22.077	28.172	12.636	12.297	26.865	1'41.820	230.8	19:01'25.169
4	22.077	27.734	12.559	12.329	26.034	1'40.733	231.3	19:03'05.902
5	21.546	27.510	12.580	12.228	26.295	1'40.159	230.8	19:04'46.061
6	21.718	28.167	12.940	13.346	26.550	1'42.721	223.6	19:06'28.782
7	21.439	27.644	12.524	<b>11.939</b>	<b>25.795</b>	1'39.341	232.3	19:08'08.123
8	22.087	27.651	12.551	12.548	26.421	1'41.258	<b>233.3</b>	19:09'49.381
9	21.730	27.802	12.769	12.549	26.023	1'40.873	226.9	19:11'30.254
10	21.740	28.563	12.771	12.403	26.992	1'42.469	230.3	19:13'12.723
11	21.388	27.393	12.696	12.965	26.085	1'40.527	226.4	19:14'53.250
12	<b>21.314</b>	<b>27.327</b>	<b>12.432</b>	12.058	25.812	<b>1'38.943</b>	232.8	19:16'32.193

17° 27 T. SKINNER (1'39.200)								
Lap	Seg. 1	Seg. 2	Seg. 3	Seg. 4	Seg. 5	Lap Time	km/h	Local Time
1	22.799	30.435	13.021	13.216	27.856	225.5	18:57'51.456	
2	21.856	28.283	12.520	12.680	26.360	1'42.642	228.3	18:59'34.098
3	22.606	27.749	12.516	12.377	26.219	1'40.717	<b>234.3</b>	19:01'14.815
4	21.736	27.661	12.576	12.064	26.201	1'41.108	231.3	19:02'55.923
5	21.642	27.994	12.661	12.141	25.873	1'40.405	229.3	19:04'36.328
6	21.642	27.429	12.549	12.259	26.121	1'40.000	230.8	19:06'16.328
7	24.809	28.539	15.386	14.929	29.414	1'53.077 P		19:08'09.405
8	1'46.553	27.888	12.724	12.295	26.484	3'05.944 P	227.8	19:11'53.349
9	21.571	27.367	12.785	12.244	25.835	1'39.802	229.3	19:12'55.151
10	21.594	27.357	<b>12.495</b>	<b>12.015</b>	<b>25.739</b>	<b>1'39.200</b>	230.8	19:14'34.351
11	<b>21.550</b>	<b>27.235</b>	12.513	12.086	25.857	1'39.241	231.3	19:16'13.592

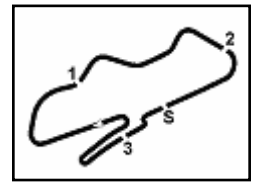
18° 49 T. RAWSTHORNE (1'40.058)								
Lap	Seg. 1	Seg. 2	Seg. 3	Seg. 4	Seg. 5	Lap Time	km/h	Local Time
1	22.693	32.141	13.909	13.943	29.563	210.1	18:57'59.192	
2	22.307	28.668	13.086	12.755	27.951	1'45.153	<b>227.4</b>	18:59'44.345
3	22.307	30.089	16.357	13.793	27.429	1'49.975		19:01'34.320
4	21.838	28.415	12.855	12.352	26.899	1'42.359	224.1	19:03'16.679
5	21.941	27.844	12.872	12.516	26.654	1'41.827	223.6	19:04'58.506
6	21.784	28.103	12.937	12.347	26.861	1'42.032	221.3	19:06'40.538
7	21.965	28.628	<b>12.720</b>	12.714	28.738	1'44.765	226.9	19:08'25.303

1	22.169	28.445	13.029	12.374	26.479	1'42.496	226.4	18:58'22.947
2	22.128	28.240	13.035	<b>12.077</b>	26.079	1'41.559	225.5	19:01'47.002
3	21.981	27.802	12.920	12.384	26.486	1'41.573	224.5	19:03'28.575
4	<b>21.465</b>	27.761	13.033	12.121	25.946	1'40.326	225.0	19:05'08.901
5	21.841	27.655	<b>12.802</b>	12.233	<b>25.613</b>	1'40.144	<b>226.9</b>	19:06'49.045
6	21.903	27.967	12.993	12.251	25.868	1'40.982	225.0	19:08'30.027
7	21.933	28.122	13.031	12.311	26.024	1'41.421	<b>226.9</b>	19:10'11.448
8	21.649	28.049	12.889	12.407	26.400	1'41.394	225.9	19:11'52.842
9	23.127	32.404	13.115	12.592	31.381	1'52.619	223.6	19:13'45.461
10	21.574	<b>27.504</b>	12.908	12.324	25.990	1'40.300	225.5	19:15'25.761
11	21.597	27.653	12.920	12.206	25.682	<b>1'40.058</b>	225.5	19:17'05.819

19° 34 S. WADDELOW (1'40.106)								
Lap	Seg. 1	Seg. 2	Seg. 3	Seg. 4	Seg. 5	Lap Time	km/h	Local Time
1	22.287	30.611	13.241	13.919	28.250	209.7	18:57'58.472	
2	22.103	28.796	13.151	12.403	26.842	1'43.479	227.8	18:59'41.951
3	22.103	28.221	12.741	12.589	26.583	1'42.237	230.8	19:01'24.188
4	21.951	27.722	12.573	12.408	26.368	1'41.022	234.3	19:03'05.210
5	21.764	27.786	12.579	12.277	26.275	1'40.681	<b>235.3</b>	19:04'45.891
6	21.675	<b>27.546</b>	<b>12.512</b>	12.187	<b>26.186</b>	<b>1'40.106</b>	<b>235.3</b>	19:06'25.997
7	<b>21.547</b>	27.965	12.551	12.245	26.796	1'41.104	233.8	19:08'07.101
8	21.930	27.775	12.599	12.466	26.816	1'41.586	233.8	19:09'48.687
9	21.660	27.753	12.614	<b>12.047</b>	26.575	<b>1'40.649</b>	<b>235.3</b>	19:11'29.336
10	22.102	28.955	12.828	12.319	28.444	1'44.648 P	231.8	19:13'13.984
11	1'53.217	29.563	13.011	14.080	27.764	3'17.635 P	229.3	19:16'31.619

20° 6 P. HASLER (1'40.242)								
Lap	Seg. 1	Seg. 2	Seg. 3	Seg. 4	Seg. 5	Lap Time	km/h	Local Time
1	22.571	31.875	14.330	14.435	29.187	210.9	18:57'59.100	
2	22.036	28.368	12.933	12.889	26.556	1'43.317	225.5	18:59'42.417
3	22.170	27.359	12.770	12.649	26.661	1'41.609	226.4	19:03'06.511
4	21.847	27.441	12.872	12.668	26.441	1'41.269	220.0	19:04'47.780
5	21.786	27.251	12.743	13.051	26.535	1'41.366	227.4	19:06'29.146
6	21.731	27.578	12.847	12.509	26.392	1'41.057	226.4	19:08'10.203
7	21.736	27.250	12.806	12.402	26.064	1'40.258	226.9	19:09'50.461
8	<b>21.713</b>	<b>27.084</b>	12.849	12.898	26.751	1'41.295	225.0	19:11'31.756
9	22.949	27.589	<b>12.670</b>	12.500	26.121	1'41.679	<b>227.8</b>	19:13'13.435
10	21.758	27.173	12.832	12.349	26.237	1'40.349	223.1	19:14'53.784
11	22.192	27.258	12.704	<b>12.235</b>	<b>25.853</b>	<b>1'40.242</b>	227.4	





7	21.775	28.044	12.954	12.335	26.531	1'41.639	225.9	19:10'06.942
8	22.007	27.805	12.921	12.300	<b>26.233</b>	1'41.266	225.0	19:11'48.208
9	21.939	27.903	12.826	12.407	26.699	1'41.774	225.5	19:13'29.982
10	21.862	27.835	12.885	<b>12.258</b>	26.391	<b>1'41.231</b>	224.5	19:15'11.213
11	21.889	<b>27.617</b>	12.834	12.736	26.968	1'42.044	224.1	19:16'53.257

**24° 71 W. PEARCE (1'43.026)**

Lap	Seg. 1	Seg. 2	Seg. 3	Seg. 4	Seg. 5	Lap Time	km/h	Local Time
								18:58'20.493
1						2'53.352 P		19:01'13.845
2						1'45.572		19:02'59.417
3						1'45.535		19:04'44.952
4						1'44.194		19:06'29.146
5						1'43.628		19:08'12.774
6						1'47.270 P		19:10'00.044
7	1'48.762	28.707	13.101	12.962	27.102	3'10.634 P	220.9	19:13'10.678
8	22.534	28.125	12.806	<b>12.875</b>	<b>26.686</b>	<b>1'43.026</b>	224.1	19:14'53.704
9	<b>22.144</b>	<b>27.979</b>	<b>12.797</b>	13.716	26.767	1'43.403	<b>225.5</b>	19:16'37.107

**25° 14 L. KING (1'43.183)**

Lap	Seg. 1	Seg. 2	Seg. 3	Seg. 4	Seg. 5	Lap Time	km/h	Local Time
								18:57'57.583
1	22.901	33.085	14.189	13.865	28.535		217.7	18:57'57.583
2	22.718	28.885	13.326	13.088	28.102	1'46.302	221.8	18:59'43.885
3	22.442	28.751	13.495	12.843	26.889	1'44.696	220.4	19:01'28.581
4	22.442	28.480	13.291	12.881	27.342	1'44.436	<b>228.8</b>	19:03'13.017
5	22.283	28.605	13.221	12.705	27.257	1'44.071	225.0	19:04'57.088
6	22.449	28.254	13.002	12.615	26.863	<b>1'43.183</b>	225.0	19:06'40.271
7	<b>22.125</b>	28.299	13.040	<b>12.475</b>	1'07.681	2'23.620	227.4	19:09'03.891
8	22.449	28.419	13.189	12.776	<b>26.732</b>	1'43.565	226.9	19:10'47.456
9	22.358	28.018	12.963	12.694	27.936	1'43.969 P	225.9	19:12'31.425
10	1'08.721	28.204	12.958	12.676	27.140	2'29.699 P	225.9	19:15'01.124
11	22.325	<b>27.858</b>	<b>12.886</b>	12.928	27.516	1'43.513	224.5	19:16'44.637

**26° 912 M. HAMBRO (1'43.515)**

Lap	Seg. 1	Seg. 2	Seg. 3	Seg. 4	Seg. 5	Lap Time	km/h	Local Time
								18:58'13.052
1	23.621	33.810	14.137	14.840	29.878		183.4	18:58'13.052
2	23.264	29.581	13.344	13.298	27.627	1'47.471	204.5	19:00'00.523
3	23.067	29.110	12.964	13.332	27.474	1'46.144	211.8	19:01'46.667
4	<b>22.321</b>	28.693	12.946	13.138	26.893	1'44.737	217.7	19:03'31.404
5	22.462	<b>28.427</b>	12.896	12.869	27.002	<b>1'43.515</b>	217.7	19:05'14.919
6	22.462	28.757	12.831	12.747	27.064	1'43.861	218.6	19:06'58.780
7	22.658	28.457	12.828	<b>12.539</b>	27.513	1'43.995	<b>219.5</b>	19:08'42.775
8	22.689	28.656	13.027	13.398	27.527	1'45.297	194.2	19:10'28.072
9	22.900	29.369	<b>12.761</b>	12.836	<b>26.654</b>	1'44.520	<b>219.5</b>	19:12'12.592
10	22.578	28.647	13.143	13.231	27.970	1'45.569	193.5	19:13'58.161
11	22.628	28.834	13.089	12.811	27.212	1'44.574	212.6	19:15'42.735
12	22.378	28.882	13.101	12.914	27.109	1'44.384	205.7	19:17'27.119

**27° 98 K. JAGGARD (1'46.524)**

Lap	Seg. 1	Seg. 2	Seg. 3	Seg. 4	Seg. 5	Lap Time	km/h	Local Time
								18:58'11.036
1	23.511	36.263	15.295	14.356	29.225		186.9	18:58'11.036
2	23.219	30.478	13.490	13.214	27.384	1'48.077	209.3	18:59'59.113
3	23.219	29.811	13.209	<b>13.008</b>	<b>27.277</b>	<b>1'46.524</b>	218.6	19:01'45.637
4	<b>22.752</b>	29.662	<b>13.141</b>	13.742	27.814	1'47.111	211.4	19:03'32.748
5	23.060	29.804	13.477	13.583	31.658	1'51.582 P	208.5	19:05'24.330
6	4'52.679	30.411	13.408	13.321	28.138	6'17.957 P	<b>219.1</b>	19:11'42.287
7	23.576	<b>29.451</b>	13.370	13.161	30.243	1'49.801 P	209.3	19:13'32.088

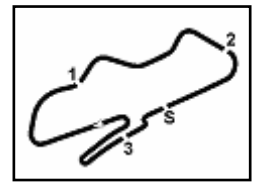
**28° 88 R. ROONEY (1'46.853)**

Lap	Seg. 1	Seg. 2	Seg. 3	Seg. 4	Seg. 5	Lap Time	km/h	Local Time
								18:58'12.482
1	24.353	33.286	15.361	14.752	29.866		177.6	18:58'12.482
2	23.868	30.154	13.525	13.252	28.959	1'50.243	<b>214.7</b>	19:00'02.725
3	23.868	29.264	13.691	13.099	28.261	1'48.183	203.4	19:01'50.908
4	23.493	29.482	13.876	13.629	28.325	1'48.805	212.2	19:03'39.713
5	23.285	<b>28.749</b>	13.504	13.505	28.152	1'47.195	213.4	19:05'26.908
6	23.236	29.456	13.624	13.429	28.182	1'47.927	211.4	19:07'14.835
7	23.150	29.387	13.440	<b>12.990</b>	28.152	1'47.119	213.4	19:09'01.954
8	<b>22.891</b>	29.824	13.459	13.281	28.078	1'47.533	204.9	19:10'49.487
9	23.527	29.265	<b>13.411</b>	13.382	27.942	1'47.527	211.8	19:12'37.014
10	23.132	29.737	13.489	13.173	<b>27.848</b>	1'47.379	212.6	19:14'24.393
11	22.920	29.187	13.510	13.138	28.098	<b>1'46.853</b>	211.8	19:16'11.246

P = Pits In/Out - C = Lap-Time Cancelled

These data/results cannot be reproduced, stored and/or transmitted in whole or in part by any manner of electronic, mechanical, photocopying, recording, broadcasting or otherwise now known or herein after developed without the previous express consent by the copyright owner, except for reproduction in daily press and regular printed publications on sale to the public within 60 days of the event related to those data/results and always provided that copyright symbol appears together as follows below.

© DORNA WSBK ORGANIZATION Srl 2016

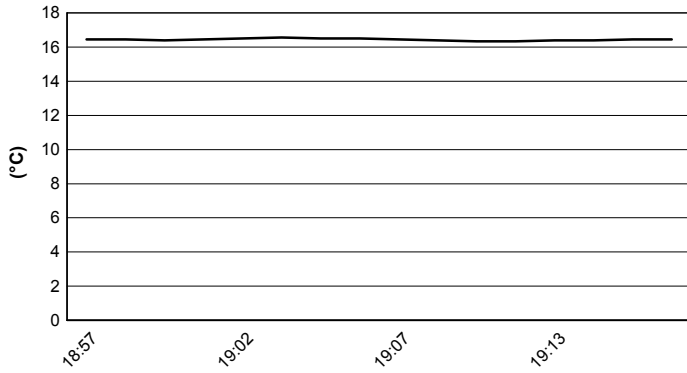


Donington Park 4.023 m

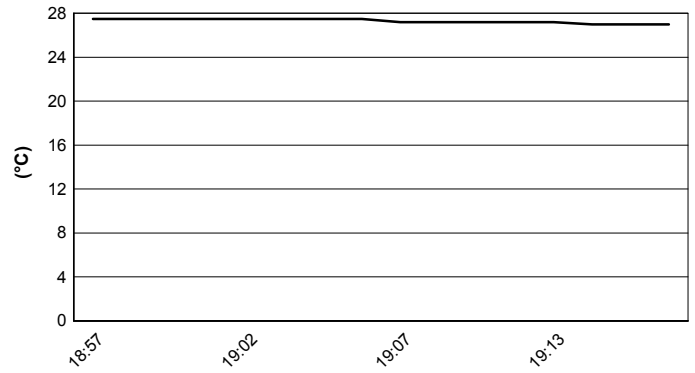
Session started 18:56

Session ended 19:18

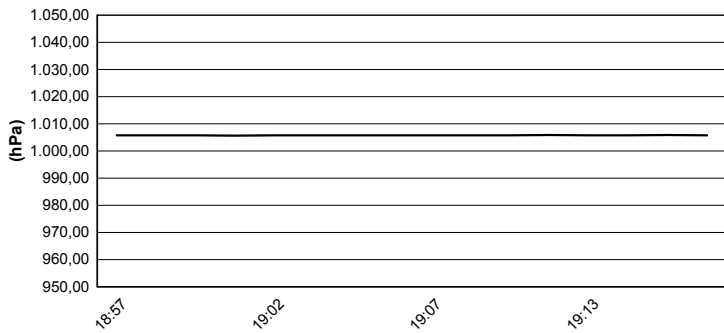
### Air Temperature



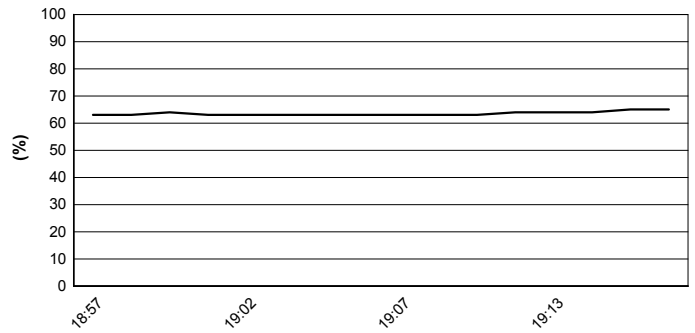
### Track Temperature



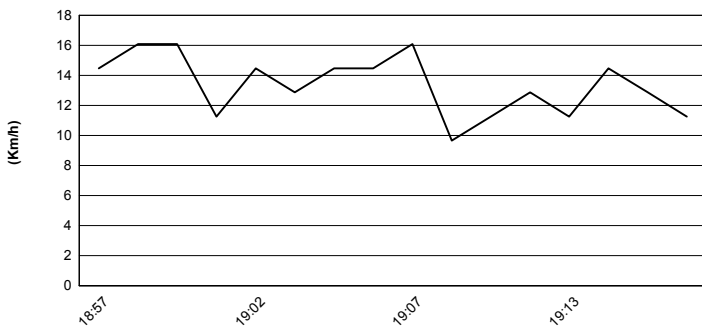
### Air Pressure



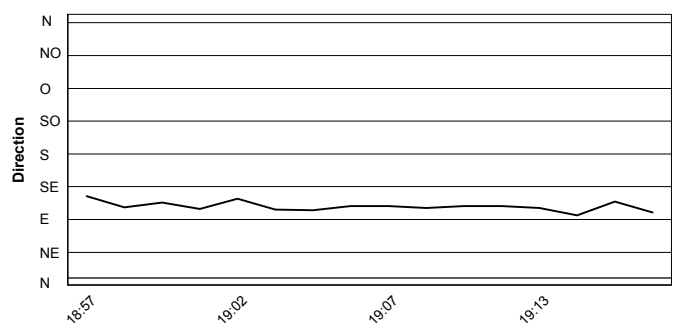
### Humidity



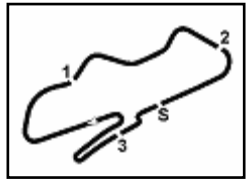
### Wind Speed



### Wind Direction



These data/results cannot be reproduced, stored and/or transmitted in whole or in part by any manner of electronic, mechanical, photocopying, recording, broadcasting or otherwise now known or herein after developed without the previous express consent by the copyright owner, except for reproduction in daily press and regular printed publications on sale to the public within 60 days of the event related to those data/results and always provided that copyright symbol appears together as follows below.  
 © DORNA WSBK ORGANIZATION Srl 2016



**Best Lap**

1	2 L. MORRIS	Ducati 899	1'34.938
2	43 R. BROWN	Ducati 899	1'35.499
3	10 S. NEARY	Ducati 899	1'35.567
4	7 P. ATKINSON	Ducati 899	1'35.609
5	13 R. GUIVER	Ducati 899	1'35.659
6	11 L. DAWSON	Ducati 899	1'35.769
7	77 J. RAILTON	Ducati 899	1'35.789
8	21 M. CHEETHAM	Ducati 899	1'36.432
9	41 D. FERNS	Ducati 899	1'36.563
10	42 C. CURRIE	Ducati 899	1'37.283
11	5 S. MIDDLEMAS	Ducati 899	1'37.388
12	15 J. WAGHORN	Ducati 899	1'38.090
13	75 D. HILL	Ducati 899	1'38.520
14	48 N. WILSON	Ducati 899	1'38.525
15	67 R. HUMPHRIES	Ducati 899	1'38.884
16	16 J. MASON	Ducati 899	1'38.943
17	27 T. SKINNER	Ducati 899	1'39.200
18	49 T. RAWSTHORNE	Ducati 899	1'40.058
19	34 S. WADDELOW	Ducati 899	1'40.106
20	6 P. HASLER	Ducati 899	1'40.242
21	28 B. BROADWAY	Ducati 899	1'40.578
22	69 D. COMPTON	Ducati 899	1'41.026
23	23 A. FOSTER	Ducati 899	1'41.231
24	71 W. PEARCE	Ducati 899	1'43.026
25	14 L. KING	Ducati 899	1'43.183
26	912 M. HAMBRO	Ducati 899	1'43.515
27	98 K. JAGGARD	Ducati 899	1'46.524
28	88 R. ROONEY	Ducati 899	1'46.853
29	22 D. MACKAY	Ducati 899	
30	17 C. STEVENS	Ducati 899	

**Top Speeds**

1	13 R. GUIVER	Ducati 899	238.4
2	11 L. DAWSON	Ducati 899	238.4
3	43 R. BROWN	Ducati 899	237.9
4	2 L. MORRIS	Ducati 899	237.4
5	7 P. ATKINSON	Ducati 899	235.8
6	34 S. WADDELOW	Ducati 899	235.3
7	41 D. FERNS	Ducati 899	234.8
8	27 T. SKINNER	Ducati 899	234.3
9	75 D. HILL	Ducati 899	233.8
10	21 M. CHEETHAM	Ducati 899	233.3
11	5 S. MIDDLEMAS	Ducati 899	233.3
12	16 J. MASON	Ducati 899	233.3
13	42 C. CURRIE	Ducati 899	231.8
14	10 S. NEARY	Ducati 899	231.8
15	67 R. HUMPHRIES	Ducati 899	231.8
16	77 J. RAILTON	Ducati 899	231.8
17	48 N. WILSON	Ducati 899	230.8
18	69 D. COMPTON	Ducati 899	229.8
19	14 L. KING	Ducati 899	228.8
20	6 P. HASLER	Ducati 899	227.8
21	23 A. FOSTER	Ducati 899	227.4
22	28 B. BROADWAY	Ducati 899	227.4
23	49 T. RAWSTHORNE	Ducati 899	226.9
24	71 W. PEARCE	Ducati 899	225.5
25	15 J. WAGHORN	Ducati 899	224.5
26	912 M. HAMBRO	Ducati 899	219.5
27	98 K. JAGGARD	Ducati 899	219.1
28	88 R. ROONEY	Ducati 899	214.7

Seg. 1			Seg. 2			Seg. 3			Seg. 4			Seg. 5		
1	13 R. GUIVER	20.311	1	10 S. NEARY	25.765	1	2 L. MORRIS	12.095	1	43 R. BROWN	11.467	1	2 L. MORRIS	24.558
2	2 L. MORRIS	20.505	2	2 L. MORRIS	25.924	2	13 R. GUIVER	12.117	2	7 P. ATKINSON	11.532	2	7 P. ATKINSON	24.820
3	10 S. NEARY	20.531	3	43 R. BROWN	26.016	3	41 D. FERNS	12.141	3	2 L. MORRIS	11.607	3	77 J. RAILTON	24.927
4	7 P. ATKINSON	20.536	4	41 D. FERNS	26.032	4	7 P. ATKINSON	12.175	4	11 L. DAWSON	11.620	4	43 R. BROWN	24.993
5	11 L. DAWSON	20.572	5	13 R. GUIVER	26.044	5	11 L. DAWSON	12.180	5	77 J. RAILTON	11.632	5	13 R. GUIVER	25.119
6	43 R. BROWN	20.598	6	77 J. RAILTON	26.095	6	43 R. BROWN	12.187	6	41 D. FERNS	11.661	6	10 S. NEARY	25.132
7	77 J. RAILTON	20.646	7	11 L. DAWSON	26.130	7	10 S. NEARY	12.191	7	10 S. NEARY	11.711	7	21 M. CHEETHAM	25.152
8	21 M. CHEETHAM	20.709	8	21 M. CHEETHAM	26.260	8	21 M. CHEETHAM	12.226	8	13 R. GUIVER	11.717	8	11 L. DAWSON	25.172
9	41 D. FERNS	20.888	9	7 P. ATKINSON	26.293	9	5 S. MIDDLEMAS	12.340	9	21 M. CHEETHAM	11.727	9	41 D. FERNS	25.185
10	5 S. MIDDLEMAS	20.957	10	5 S. MIDDLEMAS	26.424	10	77 J. RAILTON	12.359	10	75 D. HILL	11.826	10	15 J. WAGHORN	25.341
11	42 C. CURRIE	20.963	11	42 C. CURRIE	26.541	11	16 J. MASON	12.432	11	5 S. MIDDLEMAS	11.871	11	42 C. CURRIE	25.390
12	67 R. HUMPHRIES	21.197	12	67 R. HUMPHRIES	26.601	12	75 D. HILL	12.454	12	42 C. CURRIE	11.911	12	5 S. MIDDLEMAS	25.537
13	15 J. WAGHORN	21.198	13	48 N. WILSON	26.683	13	42 C. CURRIE	12.468	13	16 J. MASON	11.939	13	49 T. RAWSTHORNE	25.613
14	75 D. HILL	21.262	14	75 D. HILL	26.896	14	67 R. HUMPHRIES	12.473	14	48 N. WILSON	11.969	14	48 N. WILSON	25.647
15	48 N. WILSON	21.291	15	15 J. WAGHORN	26.954	15	15 J. WAGHORN	12.489	15	27 T. SKINNER	12.015	15	75 D. HILL	25.685
16	16 J. MASON	21.314	16	6 P. HASLER	27.084	16	27 T. SKINNER	12.495	16	15 J. WAGHORN	12.032	16	27 T. SKINNER	25.739
17	49 T. RAWSTHORNE	21.465	17	27 T. SKINNER	27.235	17	34 S. WADDELOW	12.512	17	34 S. WADDELOW	12.047	17	16 J. MASON	25.795
18	34 S. WADDELOW	21.547	18	16 J. MASON	27.327	18	48 N. WILSON	12.569	18	49 T. RAWSTHORNE	12.077	18	6 P. HASLER	25.853
19	27 T. SKINNER	21.550	19	28 B. BROADWAY	27.377	19	6 P. HASLER	12.670	19	67 R. HUMPHRIES	12.160	19	69 D. COMPTON	25.909
20	28 B. BROADWAY	21.587	20	49 T. RAWSTHORNE	27.504	20	23 A. FOSTER	12.720	20	69 D. COMPTON	12.210	20	67 R. HUMPHRIES	25.957
21	6 P. HASLER	21.713	21	34 S. WADDELOW	27.546	21	28 B. BROADWAY	12.730	21	6 P. HASLER	12.235	21	28 B. BROADWAY	26.158
22	23 A. FOSTER	21.775	22	23 A. FOSTER	27.617	22	912 M. HAMBRO	12.761	22	23 A. FOSTER	12.258	22	34 S. WADDELOW	26.186
23	69 D. COMPTON	21.811	23	69 D. COMPTON	27.735	23	71 W. PEARCE	12.797	23	28 B. BROADWAY	12.323	23	23 A. FOSTER	26.233
24	14 L. KING	22.125	24	14 L. KING	27.858	24	49 T. RAWSTHORNE	12.802	24	14 L. KING	12.475	24	912 M. HAMBRO	26.654
25	71 W. PEARCE	22.144	25	71 W. PEARCE	27.979	25	14 L. KING	12.886	25	912 M. HAMBRO	12.539	25	71 W. PEARCE	26.686
26	912 M. HAMBRO	22.321	26	912 M. HAMBRO	28.427	26	69 D. COMPTON	12.908	26	71 W. PEARCE	12.875	26	14 L. KING	26.732
27	98 K. JAGGARD	22.752	27	88 R. ROONEY	28.749	27	98 K. JAGGARD	13.141	27	88 R. ROONEY	12.990	27	98 K. JAGGARD	27.277
28	88 R. ROONEY	22.891	28	98 K. JAGGARD	29.451	28	88 R. ROONEY	13.411	28	98 K. JAGGARD	13.008	28	88 R. ROONEY	27.848